

Recombinant

DGRmAb®

Phospho-MSK1 (Ser376) (DGR12909) Rabbit mAb (PBS Only)

db11134-PBS

Package : 10µg 100µg

Product Name : Phospho-MSK1 (Ser376) (DGR12909) Rabbit mAb (PBS Only)**Cat.No.:** db11134-PBS**Synonyms** : MSK1; RLPK; MSPK1**Application** : WB, IHC-P, ICC/IF**Reactivity** : Human,Rat**Host species** : Rabbit**Background**

Serine/threonine-protein kinase that is required for the mitogen or stress-induced phosphorylation of the transcription factors CREB1 and ATF1 and for the regulation of the transcription factors RELA, STAT3 and ETV1/ER81, and that contributes to gene activation by histone phosphorylation and functions in the regulation of inflammatory genes. Phosphorylates CREB1 and ATF1 in response to mitogenic or stress stimuli such as UV-C irradiation, epidermal growth factor (EGF) and anisomycin.

Immunogen

A synthetic phosphopeptide corresponding to residues surrounding Ser376 of human MSK1

Gene ID

9252

Swiss Prot

O75582

Synonyms

MSK1; RLPK; MSPK1

Reactivity

Human,Rat

Application

WB, IHC-P, ICC/IF

Calculated MW

90 kDa

Observed MW

90 kDa

Host species

Rabbit

Clonality

Monoclonal

Clonality No.

DGR12909

Isotype

IgG

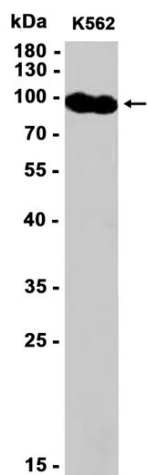
Purity

Affinity Purification

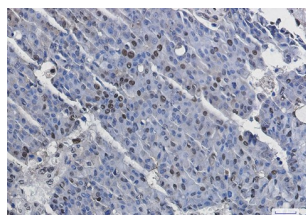
Conjugation

Un-conjugated

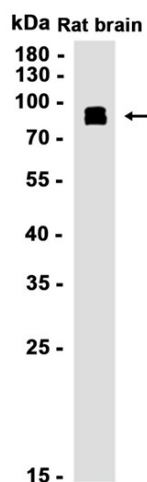
Concentration	1 mg/mL
Formulation	PBS Only
Storage Stability	Store at -20°C. Recommended to aliquot into single-use vials. Supplied in 1X PBS (pH 7.4). BSA and Azide Free. Stable for 12 months from date of receipt.



Western blot analysis of extracts from K562 cells using [db11134](#) at 1:1000.



Immunohistochemical analysis of paraffin-embedded human breast cancer using [db11134](#) antibody.



Western blot analysis of extracts from Rat brain tissue using [db11134](#) at 1:1000.