

Recombinant

DGRmAb®

Amyloid Precursor Protein (DGR16504) Rabbit mAb (PBS Only)

db11190-PBS

Package : 10µg 100µg

Product Name : Amyloid Precursor Protein (DGR16504) Rabbit mAb (PBS Only)**Cat.No.:** db11190-PBS**Synonyms** : AAA; AD1; PN2; ABPP; APP1; CVAP; ABETA; PN-II; preA4; CTFgamma**Application** : WB, IHC-P, FC**Reactivity** : Human,Mouse,Rat**Host species** : Rabbit**Background**

This gene encodes a cell surface receptor and transmembrane precursor protein that is cleaved by secretases to form a number of peptides. Some of these peptides are secreted and can bind to the acetyltransferase complex APBB1/TIP60 to promote transcriptional activation, while others form the protein basis of the amyloid plaques found in the brains of patients with Alzheimer disease. In addition, two of the peptides are antimicrobial peptides, having been shown to have bacteriocidal and antifungal activities. Mutations in this gene have been implicated in autosomal dominant Alzheimer disease and cerebroarterial amyloidosis (cerebral amyloid angiopathy). Multiple transcript variants encoding several different isoforms have been found for this gene. [provided by RefSeq, Aug 2014]

Immunogen

A synthetic peptide of human Amyloid Precursor Protein

Gene ID

351

Swiss Prot

P05067

Synonyms

AAA; AD1; PN2; ABPP; APP1; CVAP; ABETA; PN-II; preA4; CTFgamma

Reactivity

Human,Mouse,Rat

Application

WB, IHC-P, FC

Calculated MW

87 kDa

Observed MW

100 kDa

Host species

Rabbit

Clonality

Monoclonal

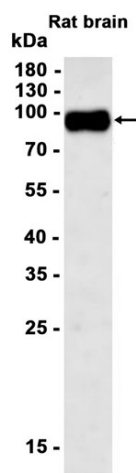
Clonality No.

DGR16504

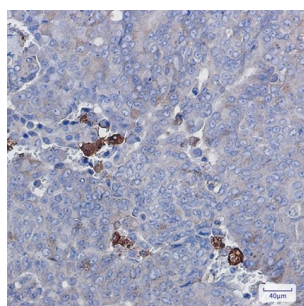
Isotype

IgG

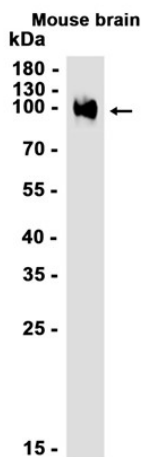
Purity	Affinity Purification
Conjugation	Un-conjugated
Concentration	1 mg/mL
Formulation	PBS Only
Storage Stability	Store at -20°C. Recommended to aliquot into single-use vials. Supplied in 1X PBS (pH 7.4). BSA and Azide Free. Stable for 12 months from date of receipt.



Western blot analysis of extracts from Rat brain tissue using [db11190](#) at 1:1000.



Immunohistochemical analysis of paraffin-embedded human breast cancer using [db11190](#) antibody.



Western blot analysis of extracts from Mouse brain tissue using [db11190](#) at 1:1000.