

Recombinant

DGRmAb®

Ferritin Heavy Chain (DGR13104) Rabbit mAb (PBS Only)

db11194-PBS

Package : 10µg 100µg

Product Name : Ferritin Heavy Chain (DGR13104) Rabbit mAb (PBS Only)

Cat.No.: db11194-PBS

Synonyms : FHC; FTH; HFE5; PLIF; FTHL6; PIG15

Application : WB, ICC/IF, FC

Reactivity : Human,Mouse,Rat

Host species : Rabbit

Background

This gene encodes the heavy subunit of ferritin, the major intracellular iron storage protein in prokaryotes and eukaryotes. It is composed of 24 subunits of the heavy and light ferritin chains. Variation in ferritin subunit composition may affect the rates of iron uptake and release in different tissues. A major function of ferritin is the storage of iron in a soluble and nontoxic state. Defects in ferritin proteins are associated with several neurodegenerative diseases. This gene has multiple pseudogenes. Several alternatively spliced transcript variants have been observed, but their biological validity has not been determined. [provided by RefSeq, Jul 2008]

Immunogen

A synthetic peptide of human Ferritin Heavy Chain

Gene ID

2495

Swiss Prot

P02794

Synonyms

FHC; FTH; HFE5; PLIF; FTHL6; PIG15

Reactivity

Human,Mouse,Rat

Application

WB, ICC/IF, FC

Calculated MW

21 kDa

Observed MW

21 kDa

Host species

Rabbit

Clonality

Monoclonal

Clonality No.

DGR13104

Isotype

IgG

Purity

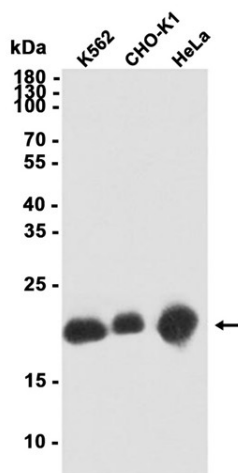
Affinity Purification

Conjugation

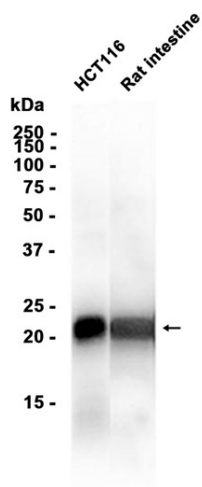
Un-conjugated

Concentration	1 mg/mL
Formulation	PBS Only
Storage Stability	Store at -20°C. Recommended to aliquot into single-use vials. Supplied in 1X PBS (pH 7.4). BSA and Azide Free. Stable for 12 months from date of receipt.

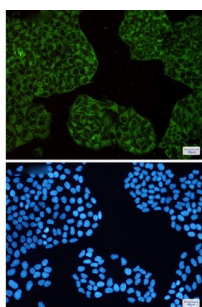
Western blot analysis of extracts from K562, CHO-K1, HeLa cells using [db11194](#) at 1:1000.

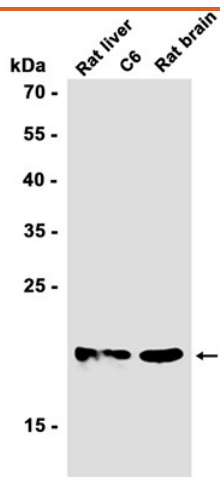


Western blot analysis of extracts from HCT116 cells and Rat intestine tissue using [db11194](#) at 1:1000.



Immunofluorescent analysis of HeLa cells using [db11194](#) antibody (green), and DAPI (blue).





Western blot analysis of extracts from C6 cells and Rat liver, Rat brain tissues using [db11194](#) at 1:1000.