

Recombinant

DGRmAb®

Cyclin H (DGR31141) Rabbit mAb (PBS Only)

db11236-PBS

Package : 10µg 100µg

Product Name : Cyclin H (DGR31141) Rabbit mAb (PBS Only)**Cat.No.:** db11236-PBS**Synonyms** : CAK; p34; p37; Cych**Application** : WB, IHC-P, ICC/IF, FC**Reactivity** : Human,Mouse**Host species** : Rabbit**Background**

The protein encoded by this gene belongs to the highly conserved cyclin family, whose members are characterized by a dramatic periodicity in protein abundance through the cell cycle. Cyclins function as regulators of CDK kinases. Different cyclins exhibit distinct expression and degradation patterns which contribute to the temporal coordination of each mitotic event. This cyclin forms a complex with CDK7 kinase and ring finger protein MAT1. The kinase complex is able to phosphorylate CDK2 and CDC2 kinases, thus functions as a CDK-activating kinase (CAK). This cyclin and its kinase partner are components of TFIIH, as well as RNA polymerase II protein complexes. They participate in two different transcriptional regulation processes, suggesting an important link between basal transcription control and the cell cycle machinery. A pseudogene of this gene is found on chromosome 4. Alternate splicing results in multiple transcript variants.

[provided by RefSeq, Nov 2010]

Immunogen

A synthetic peptide of human Cyclin H/p34

Gene ID

902

Swiss Prot

P51946

Synonyms

CAK; p34; p37; Cych

Reactivity

Human,Mouse

Application

WB, IHC-P, ICC/IF, FC

Calculated MW

38 kDa

Observed MW

36 kDa

Host species

Rabbit

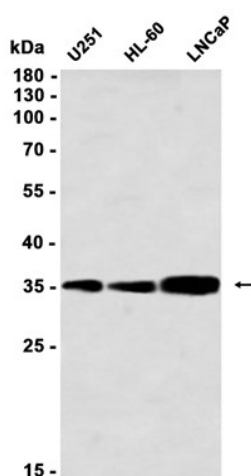
Clonality

Monoclonal

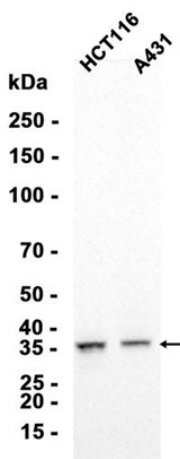
Clonality No.

DGR31141

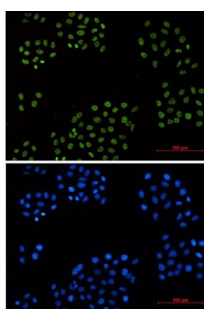
Isotype	IgG
Purity	Affinity Purification
Conjugation	Un-conjugated
Concentration	1 mg/mL
Formulation	PBS Only
Storage Stability	Store at -20°C. Recommended to aliquot into single-use vials. Supplied in 1X PBS (pH 7.4). BSA and Azide Free. Stable for 12 months from date of receipt.



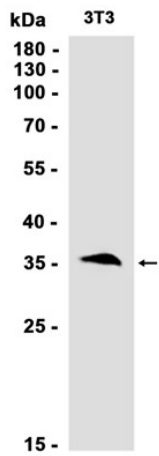
Western blot analysis of extracts from U251, HL-60, LNCaP cells using [db11236](#) at 1:1000.



Western blot analysis of extracts from HCT116, A431 cells using [db11236](#) at 1:1000.



Immunofluorescent analysis of HeLa cells using [db11236](#) antibody (green), and DAPI (blue).



Western blot analysis of extracts from 3T3 cells using db11236 at 1:1000.