

Recombinant

DGRmAb®

Phospho-MCM2 (Ser27) (DGR33274) Rabbit mAb (PBS Only)

db11609-PBS

Package : 10µg 100µg

Product Name : Phospho-MCM2 (Ser27) (DGR33274) Rabbit mAb (PBS Only)**Cat.No.:** db11609-PBS**Synonyms** : BM28; CCNL1; CDCL1; cdc19; DFNA70; D3S3194; MITOTIN**Application** : WB, IHC-P, ICC/IF, IP**Reactivity** : Human,Mouse,Rat**Host species** : Rabbit**Background**

The protein encoded by this gene is one of the highly conserved mini-chromosome maintenance proteins (MCM) that are involved in the initiation of eukaryotic genome replication. The hexameric protein complex formed by MCM proteins is a key component of the pre-replication complex (pre_RC) and may be involved in the formation of replication forks and in the recruitment of other DNA replication related proteins. This protein forms a complex with MCM4, 6, and 7, and has been shown to regulate the helicase activity of the complex. This protein is phosphorylated, and thus regulated by, protein kinases CDC2 and CDC7. Multiple alternatively spliced transcript variants have been found, but the full-length nature of some variants has not been defined. [provided by RefSeq, Oct 2012]

Immunogen

A synthetic phosphopeptide corresponding to residues surrounding Ser27 of human MCM2

Gene ID

4171

Swiss Prot

P49736

Synonyms

BM28; CCNL1; CDCL1; cdc19; DFNA70; D3S3194; MITOTIN

Reactivity

Human,Mouse,Rat

Application

WB, IHC-P, ICC/IF, IP

Calculated MW

102 kDa

Observed MW

125 kDa

Host species

Rabbit

Clonality

Monoclonal

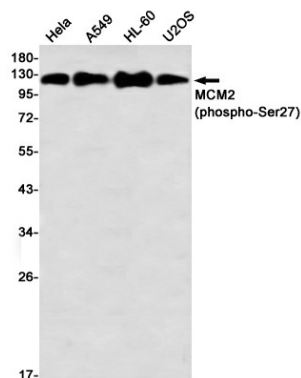
Clonality No.

DGR33274

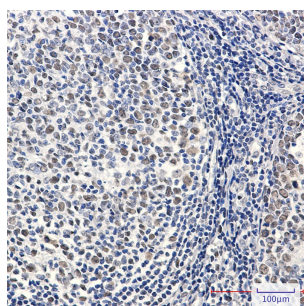
Isotype

IgG

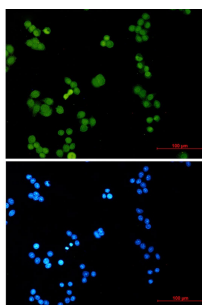
Purity	Affinity Purification
Conjugation	Un-conjugated
Concentration	1 mg/mL
Formulation	PBS Only
Storage Stability	Store at -20°C. Recommended to aliquot into single-use vials. Supplied in 1X PBS (pH 7.4). BSA and Azide Free. Stable for 12 months from date of receipt.



Western blot detection of MCM2 (phospho-Ser27) in HeLa, A549, HL-60, U2OS using MCM2 (phospho-Ser27) antibody (1:1000 diluted)



Immunohistochemical analysis of paraffin-embedded human tonsil using db11609 antibody.



Immunofluorescent analysis of HeLa cells using db11609 antibody (green), and DAPI (blue).