

Recombinant

DGRmAb®

## 14-3-3 (DGR14425) Rabbit mAb (PBS Only)

db11678-PBS

Package : 10µg 100µg

**Product Name** : 14-3-3 (DGR14425) Rabbit mAb (PBS Only)**Cat.No.:** db11678-PBS**Synonyms** : HS1; GW128; YWHAA; KCIP-1; HEL-S-1**Application** : WB**Reactivity** : Human,Mouse,Rat**Host species** : Rabbit**Background**

This gene encodes a protein belonging to the 14-3-3 family of proteins, members of which mediate signal transduction by binding to phosphoserine-containing proteins. This highly conserved protein family is found in both plants and mammals. The encoded protein has been shown to interact with RAF1 and CDC25 phosphatases, suggesting that it may play a role in linking mitogenic signaling and the cell cycle machinery. Two transcript variants, which encode the same protein, have been identified for this gene. [provided by RefSeq, Jul 2008]

**Immunogen**

A synthetic peptide of human '14-3-3

**Gene ID**

7529

**Swiss Prot**

P31946

**Synonyms**

HS1; GW128; YWHAA; KCIP-1; HEL-S-1

**Reactivity**

Human,Mouse,Rat

**Application**

WB

**Calculated MW**

28 kDa

**Observed MW**

27-29 kDa

**Host species**

Rabbit

**Clonality**

Monoclonal

**Clonality No.**

DGR14425

**Isotype**

IgG

**Purity**

Affinity Purification

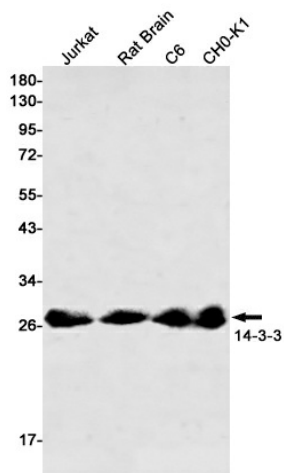
**Conjugation**

Un-conjugated

**Concentration** 1 mg/mL

**Formulation** PBS Only

**Storage Stability** Store at -20°C. Recommended to aliquot into single-use vials. Supplied in 1X PBS (pH 7.4). BSA and Azide Free. Stable for 12 months from date of receipt.



Western blot detection of 41701 in Jurkat,Rat Brain,C6,CHO-K1 cell lysates using 14-3-3 antibody(1:500 diluted).