

Recombinant

DGRmAb®

ATP citrate lyase (DGR14757) Rabbit mAb (PBS Only)

db11738-PBS

Package : 10µg 100µg

Product Name : ATP citrate lyase (DGR14757) Rabbit mAb (PBS Only)**Cat.No.:** db11738-PBS**Synonyms** : ACL; ATPCL; CLATP**Application** : WB, IHC, ICC/IF, FC, IP**Reactivity** : Human, Mouse, Rat**Host species** : Rabbit**Background**

ATP citrate lyase is the primary enzyme responsible for the synthesis of cytosolic acetyl-CoA in many tissues. The enzyme is a tetramer (relative molecular weight approximately 440,000) of apparently identical subunits. It catalyzes the formation of acetyl-CoA and oxaloacetate from citrate and CoA with a concomitant hydrolysis of ATP to ADP and phosphate. The product, acetyl-CoA, serves several important biosynthetic pathways, including lipogenesis and cholesterologenesis. In nervous tissue, ATP citrate-lyase may be involved in the biosynthesis of acetylcholine. Multiple transcript variants encoding distinct isoforms have been identified for this gene. [provided by RefSeq, Dec 2014]

Immunogen

A synthetic peptide of human ATP citrate lyase

Gene ID

47

Swiss Prot

P53396

Synonyms

ACL; ATPCL; CLATP

Reactivity

Human, Mouse, Rat

Application

WB, IHC, ICC/IF, FC, IP

Calculated MW

121 kDa

Observed MW

121 kDa

Host species

Rabbit

Clonality

Monoclonal

Clonality No.

DGR14757

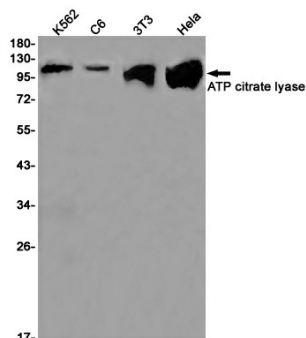
Isotype

IgG

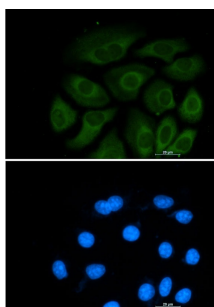
Purity

Affinity Purification

Conjugation	Un-conjugated
Concentration	1 mg/mL
Formulation	PBS Only
Storage Stability	Store at -20°C. Recommended to aliquot into single-use vials. Supplied in 1X PBS (pH 7.4). BSA and Azide Free. Stable for 12 months from date of receipt.



Western blot detection of ATP citrate lyase in K562, C6, 3T3, HeLa cell lysates using ATP citrate lyase antibody (1:1000 diluted).



Immunofluorescent analysis of A549 cells using db11738 antibody (green), and DAPI (blue).