

Recombinant

DGRmAb®

**RAS (DGR33433) Rabbit mAb (PBS Only)**

db11783-PBS

Package : 10µg 100µg

**Product Name** : RAS (DGR33433) Rabbit mAb (PBS Only)**Cat.No.:** db11783-PBS**Synonyms** : CTLO; HAMSV; HRAS1; RASH1; p21ras; C-H-RAS; H-RASIDX; C-BAS/HAS; C-HA-RAS1**Application** : WB, ICC/IF, FC, IP**Reactivity** : Human,Mouse,Rat**Host species** : Rabbit**Background**

This gene belongs to the Ras oncogene family, whose members are related to the transforming genes of mammalian sarcoma retroviruses. The products encoded by these genes function in signal transduction pathways. These proteins can bind GTP and GDP, and they have intrinsic GTPase activity. This protein undergoes a continuous cycle of de- and re-palmitoylation, which regulates its rapid exchange between the plasma membrane and the Golgi apparatus. Mutations in this gene cause Costello syndrome, a disease characterized by increased growth at the prenatal stage, growth deficiency at the postnatal stage, predisposition to tumor formation, cognitive disability, skin and musculoskeletal abnormalities, distinctive facial appearance and cardiovascular abnormalities. Defects in this gene are implicated in a variety of cancers, including bladder cancer, follicular thyroid cancer, and oral squamous cell carcinoma. Multiple transcript variants, which encode different isoforms, have been identified for this gene. [provided by RefSeq, Jul 2008]

**Immunogen**

A synthetic peptide of human RAS

**Gene ID**

3265,3845,4893

**Swiss Prot**

P01111,P01112,P01116

**Synonyms**

CTLO; HAMSV; HRAS1; RASH1; p21ras; C-H-RAS; H-RASIDX; C-BAS/HAS; C-HA-RAS1

**Reactivity**

Human,Mouse,Rat

**Application**

WB, ICC/IF, FC, IP

**Calculated MW**

21 kDa

**Observed MW**

21 kDa

**Host species**

Rabbit

**Clonality**

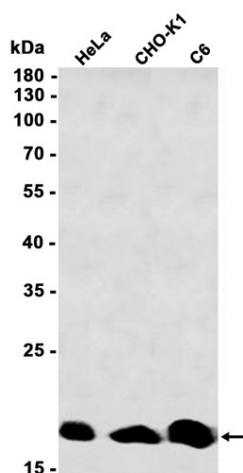
Monoclonal

**Clonality No.**

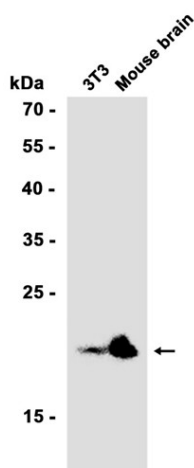
DGR33433

---

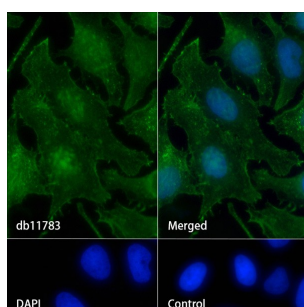
<b>Isotype</b>	IgG
<b>Purity</b>	Affinity Purification
<b>Conjugation</b>	Un-conjugated
<b>Concentration</b>	1 mg/mL
<b>Formulation</b>	PBS Only
<b>Storage Stability</b>	Store at -20°C. Recommended to aliquot into single-use vials. Supplied in 1X PBS (pH 7.4). BSA and Azide Free. Stable for 12 months from date of receipt.



Western blot analysis of extracts from HeLa, CHO-K1, C6 cells using [db11783](#) at 1:1000.



Western blot analysis of extracts from 3T3 cells and Mouse brain tissue using [db11783](#) at 1:1000.



Immunofluorescence analysis of HeLa cells labelling RAS with [db11783](#).

The cells were fixed with 4% PFA (10min, RT) followed by treatment with 0.1% Triton X-100 (10min, RT), and blocked in 1% BSA/10% normal goat serum/0.3M glycine in 0.1% PBS-Tween 20 for 1h. The cells were then incubate with [db11783](#) (1:200) at room temperature for 1h, followed by a further incubation at room temperature for 45min with Goat Anti Rabbit IgG (H+L)-AF488 ([db10005](#), shown in green). Nuclear DNA was labeled in blue with DAPI.

Control: Secondary antibody only.