

Recombinant

DGRmAb®

ALDH1L1 (DGR15185) Rabbit mAb (PBS Only)

db11799-PBS

Package : 10µg 100µg

Product Name : ALDH1L1 (DGR15185) Rabbit mAb (PBS Only)**Cat.No.:** db11799-PBS**Synonyms** : FDH; FTHFD; 10-fTHF; 10-FTHFDH**Application** : WB, IHC-P**Reactivity** : Human,Mouse,Rat**Host species** : Rabbit**Background**

The protein encoded by this gene catalyzes the conversion of 10-formyltetrahydrofolate, nicotinamide adenine dinucleotide phosphate (NADP+), and water to tetrahydrofolate, NADPH, and carbon dioxide. The encoded protein belongs to the aldehyde dehydrogenase family. Loss of function or expression of this gene is associated with decreased apoptosis, increased cell motility, and cancer progression. There is an antisense transcript that overlaps on the opposite strand with this gene locus. Alternative splicing results in multiple transcript variants. [provided by RefSeq, Jun 2012]

Immunogen

A synthetic peptide of human ALDH1L1

Gene ID

10840

Swiss Prot

O75891

Synonyms

FDH; FTHFD; 10-fTHF; 10-FTHFDH

Reactivity

Human,Mouse,Rat

Application

WB, IHC-P

Calculated MW

99 kDa

Observed MW

99 kDa

Host species

Rabbit

Clonality

Monoclonal

Clonality No.

DGR15185

Isotype

IgG

Purity

Affinity Purification

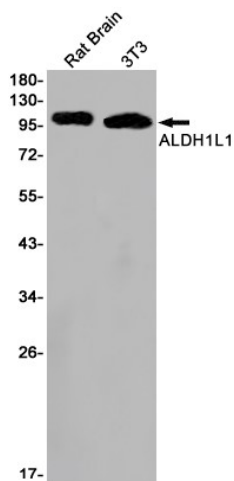
Conjugation

Un-conjugated

Concentration 1 mg/mL

Formulation PBS Only

Storage Stability Store at -20°C. Recommended to aliquot into single-use vials. Supplied in 1X PBS (pH 7.4). BSA and Azide Free. Stable for 12 months from date of receipt.



Western blot detection of ALDH1L1 in Rat Brain, 3T3 cell lysates using ALDH1L1 antibody (1:1000 diluted).

Mouse brain



Western blot analysis of extracts from Mouse brain tissue using db11799 at 1:4000.