

Recombinant

DGRmAb®

## Cyclophilin F (DGR15454) Rabbit mAb (PBS Only)

db11820-PBS

Package : 10µg 100µg

**Product Name** : Cyclophilin F (DGR15454) Rabbit mAb (PBS Only)**Cat.No.:** db11820-PBS**Synonyms** : CYP3; CypD; CyP-M; Cyp-D**Application** : WB, IHC-P, ICC/IF, FC**Reactivity** : Human,Mouse,Rat**Host species** : Rabbit

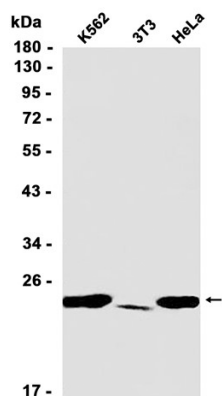
<b>Background</b>	The protein encoded by this gene is a member of the peptidyl-prolyl cis-trans isomerase (PPIase) family. PPIases catalyze the cis-trans isomerization of proline imidic peptide bonds in oligopeptides and accelerate the folding of proteins. This protein is part of the mitochondrial permeability transition pore in the inner mitochondrial membrane. Activation of this pore is thought to be involved in the induction of apoptotic and necrotic cell death. [provided by RefSeq, Jul 2008]
<b>Immunogen</b>	A synthetic peptide of human Cyclophilin F
<b>Gene ID</b>	10105
<b>Swiss Prot</b>	P30405
<b>Synonyms</b>	CYP3; CypD; CyP-M; Cyp-D
<b>Reactivity</b>	Human,Mouse,Rat
<b>Application</b>	WB, IHC-P, ICC/IF, FC
<b>Calculated MW</b>	22 kDa
<b>Observed MW</b>	18 kDa
<b>Host species</b>	Rabbit
<b>Clonality</b>	Monoclonal
<b>Clonality No.</b>	DGR15454
<b>Isotype</b>	IgG
<b>Purity</b>	Affinity Purification
<b>Conjugation</b>	Un-conjugated
<b>Concentration</b>	1 mg/mL

**Formulation**

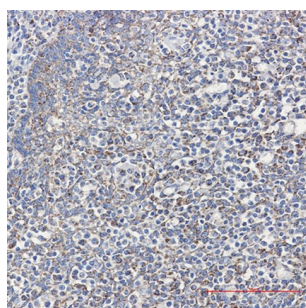
PBS Only

**Storage Stability**

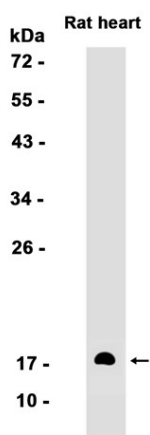
Store at -20°C. Recommended to aliquot into single-use vials. Supplied in 1X PBS (pH 7.4). BSA and Azide Free. Stable for 12 months from date of receipt.



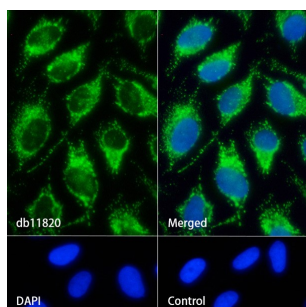
Western blot analysis of extracts from K562, 3T3, HeLa cells using [db11820](#) at 1:1000.



Immunohistochemical analysis of paraffin-embedded human tonsil using [db11820](#) antibody.



Western blot analysis of extracts from Rat heart tissue using [db11820](#) at 1:1000.



Immunofluorescence analysis of HeLa cells labelling Cyclophilin F with [db11820](#).

The cells were fixed with 4% PFA (10min, RT) followed by treatment with 0.1% Triton X-100 (10min, RT), and blocked in 1% BSA/10% normal goat serum/0.3M glycine in 0.1% PBS-Tween 20 for 1h. The cells were then incubate with [db11820](#) (1:100) at room temprature for 1h, followed by a further incubation at room temperature for 45min with Goat Anti Rabbit IgG (H+L)-AF488 ([db10005](#), shown in green). Nuclear DNA was labeled in blue with DAPI.

Control: Secondary antibody only.

