

Recombinant

DGRmAb®

Integrin alpha V (DGR11605) Rabbit mAb (PBS Only)

db11962-PBS

Package : 10µg 100µg

Product Name : Integrin alpha V (DGR11605) Rabbit mAb (PBS Only)**Cat.No.:** db11962-PBS**Synonyms** : CD51; MSK8; VNRA; VTNR**Application** : WB, IHC-P, ICC/IF, IP**Reactivity** : Human,Mouse,Rat**Host species** : Rabbit**Background**

The product of this gene belongs to the integrin alpha chain family. Integrins are heterodimeric integral membrane proteins composed of an alpha subunit and a beta subunit that function in cell surface adhesion and signaling. The encoded preprotein is proteolytically processed to generate light and heavy chains that comprise the alpha V subunit. This subunit associates with beta 1, beta 3, beta 5, beta 6 and beta 8 subunits. The heterodimer consisting of alpha V and beta 3 subunits is also known as the vitronectin receptor. This integrin may regulate angiogenesis and cancer progression. Alternative splicing results in multiple transcript variants. Note that the integrin alpha 5 and integrin alpha V subunits are encoded by distinct genes. [provided by RefSeq, Oct 2015]

Immunogen

Recombinant protein of human Integrin alpha V

Gene ID

3685

Swiss Prot

P06756

Synonyms

CD51; MSK8; VNRA; VTNR

Reactivity

Human,Mouse,Rat

Application

WB, IHC-P, ICC/IF, IP

Calculated MW

116 kDa

Observed MW

130 kDa

Host species

Rabbit

Clonality

Monoclonal

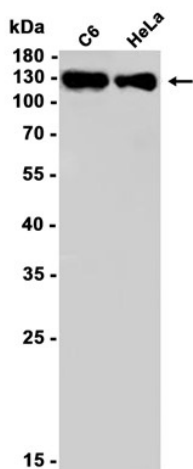
Clonality No.

DGR11605

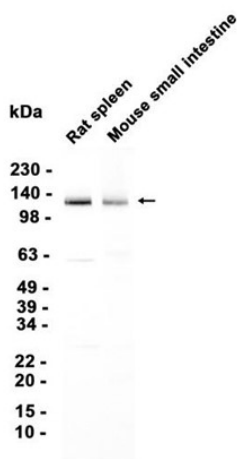
Isotype

IgG

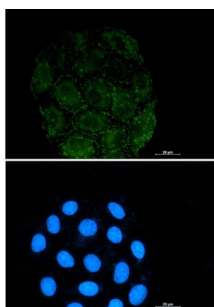
Purity	Affinity Purification
Conjugation	Un-conjugated
Concentration	1 mg/mL
Formulation	PBS Only
Storage Stability	Store at -20°C. Recommended to aliquot into single-use vials. Supplied in 1X PBS (pH 7.4). BSA and Azide Free. Stable for 12 months from date of receipt.



Western blot analysis of extracts from C6, HeLa cells using [db11962](#) at 1:1000.



Western blot analysis of extracts from Rat spleen, Mouse small intestine tissues using [db11962](#) at 1:2000.



Immunofluorescent analysis of A549 cells using [db11962](#) antibody (green), and DAPI (blue).