

Recombinant

DGRmAb®

ABCG1 (DGR13569) Rabbit mAb (PBS Only)

db12044-PBS

Package : 10µg 100µg

Product Name : ABCG1 (DGR13569) Rabbit mAb (PBS Only)**Cat.No.:** db12044-PBS**Synonyms** : ABC8; WHITE1**Application** : WB, ICC/IF**Reactivity** : Human,Mouse,Rat**Host species** : Rabbit**Background**

The protein encoded by this gene is a member of the superfamily of ATP-binding cassette (ABC) transporters. ABC proteins transport various molecules across extra- and intra-cellular membranes. ABC genes are divided into seven distinct subfamilies (ABC1, MDR/TAP, MRP, ALD, OABP, GCN20, White). This protein is a member of the White subfamily. It is involved in macrophage cholesterol and phospholipids transport, and may regulate cellular lipid homeostasis in other cell types. Six alternative splice variants have been identified. [provided by RefSeq, Jul 2008]

Immunogen

A synthetic peptide of human ABCG1

Gene ID

9619

Swiss Prot

P45844

Synonyms

ABC8; WHITE1

Reactivity

Human,Mouse,Rat

Application

WB, ICC/IF

Calculated MW

76 kDa

Observed MW

100 kDa

Host species

Rabbit

Clonality

Monoclonal

Clonality No.

DGR13569

Isotype

IgG

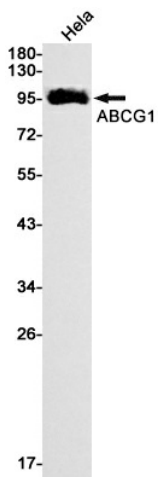
Purity

Affinity Purification

Conjugation

Un-conjugated

Concentration	1 mg/mL
Formulation	PBS Only
Storage Stability	Store at -20°C. Recommended to aliquot into single-use vials. Supplied in 1X PBS (pH 7.4). BSA and Azide Free. Stable for 12 months from date of receipt.



Western blot detection of ABCG1 in HeLa cell lysates using ABCG1 antibody(1:1000 diluted).