

Recombinant

DGRmAb®

## PP1C alpha/beta (DGR33032) Rabbit mAb (PBS Only)

db12099-PBS

Package : 10µg 100µg

**Product Name** : PP1C alpha/beta (DGR33032) Rabbit mAb (PBS Only)**Cat.No.:** db12099-PBS**Synonyms** : PP1A; PP-1A; PPP1A; PP1alpha**Application** : WB, IHC-P, ICC/IF, FC, IP**Reactivity** : Human,Mouse,Rat**Host species** : Rabbit**Background**

The protein encoded by this gene is one of the three catalytic subunits of protein phosphatase 1 (PP1). PP1 is a serine/threonine specific protein phosphatase known to be involved in the regulation of a variety of cellular processes, such as cell division, glycogen metabolism, muscle contractility, protein synthesis, and HIV-1 viral transcription. Increased PP1 activity has been observed in the end stage of heart failure. Studies in both human and mice suggest that PP1 is an important regulator of cardiac function. Mouse studies also suggest that PP1 functions as a suppressor of learning and memory. Three alternatively spliced transcript variants encoding different isoforms have been found for this gene. [provided by RefSeq, Jul 2008]

**Immunogen**

A synthetic peptide of human PPP1CA+PPP1CB

**Gene ID**

5499

**Swiss Prot**

P62136

**Synonyms**

PP1A; PP-1A; PPP1A; PP1alpha

**Reactivity**

Human,Mouse,Rat

**Application**

WB, IHC-P, ICC/IF, FC, IP

**Calculated MW**

38 kDa

**Observed MW**

38 kDa

**Host species**

Rabbit

**Clonality**

Monoclonal

**Clonality No.**

DGR33032

**Isotype**

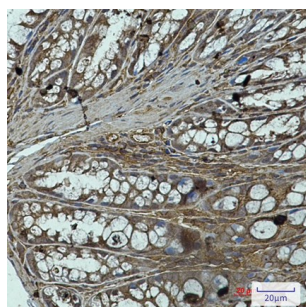
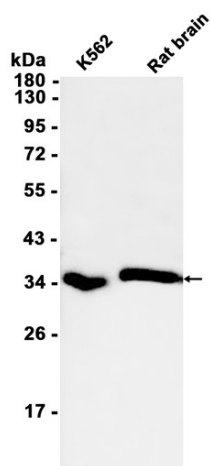
IgG

**Purity**

Affinity Purification

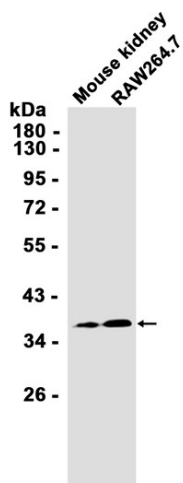
<b>Conjugation</b>	Un-conjugated
<b>Concentration</b>	1 mg/mL
<b>Formulation</b>	PBS Only
<b>Storage Stability</b>	Store at -20°C. Recommended to aliquot into single-use vials. Supplied in 1X PBS (pH 7.4). BSA and Azide Free. Stable for 12 months from date of receipt.

Western blot analysis of extracts from K562 cells and Rat brain tissue using [db12099](#) at 1:1000.

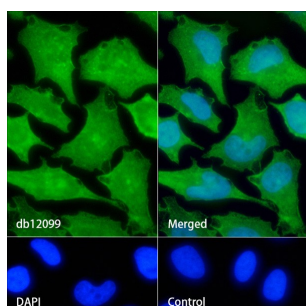
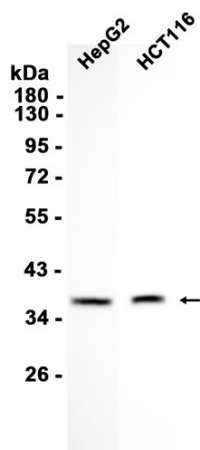


Immunohistochemical analysis of paraffin-embedded mouse colon using [db12099](#) antibody.

Western blot analysis of extracts from RAW264.7 cells and Mouse kidney tissue using [db12099](#) at 1:1000.



Western blot analysis of extracts from HepG2, HCT116 cells using [db12099](#) at 1:1000.



Immunofluorescence analysis of HeLa cells labelling PP1C alpha/beta with [db12099](#).

The cells were fixed with 4% PFA (10min, RT) followed by treatment with 0.1% Triton X-100 (10min, RT), and blocked in 1% BSA/10% normal goat serum/0.3M glycine in 0.1% PBS-Tween 20 for 1h. The cells were then incubate with [db12099](#) (1:50) at room temprature for 1h, followed by a further incubation at room temperature for 45min with Goat Anti Rabbit IgG (H+L)-AF488 ([db10005](#), shown in green). Nuclear DNA was labeled in blue with DAPI.

Control: Secondary antibody only.