

Recombinant

DGRmAb®

CDK6 (DGR11918) Rabbit mAb (PBS Only)

db12115-PBS

Package : 10µg 100µg

Product Name : CDK6 (DGR11918) Rabbit mAb (PBS Only)**Cat.No.:** db12115-PBS**Synonyms** : MCPH12; PLSTIRE**Application** : WB, IHC-P, ICC/IF, FC**Reactivity** : Human**Host species** : Rabbit**Background**

The protein encoded by this gene is a member of the CMGC family of serine/threonine protein kinases. This kinase is a catalytic subunit of the protein kinase complex that is important for cell cycle G1 phase progression and G1/S transition. The activity of this kinase first appears in mid-G1 phase, which is controlled by the regulatory subunits including D-type cyclins and members of INK4 family of CDK inhibitors. This kinase, as well as CDK4, has been shown to phosphorylate, and thus regulate the activity of, tumor suppressor protein Rb. Altered expression of this gene has been observed in multiple human cancers. A mutation in this gene resulting in reduced cell proliferation, and impaired cell motility and polarity, and has been identified in patients with primary microcephaly. [provided by RefSeq, Aug 2017]

Immunogen

A synthetic peptide of human Cdk6

Gene ID

1021

Swiss Prot

Q00534

Synonyms

MCPH12; PLSTIRE

Reactivity

Human

Application

WB, IHC-P, ICC/IF, FC

Calculated MW

37 kDa

Observed MW

37 kDa

Host species

Rabbit

Clonality

Monoclonal

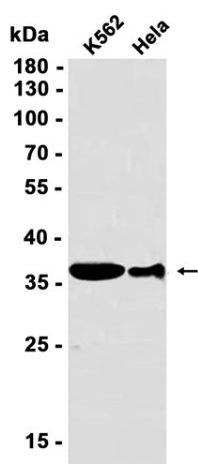
Clonality No.

DGR11918

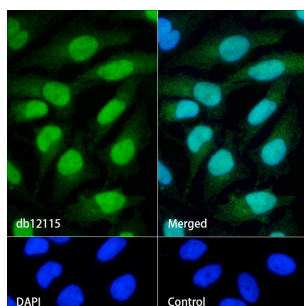
Isotype

IgG

Purity	Affinity Purification
Conjugation	Un-conjugated
Concentration	1 mg/mL
Formulation	PBS Only
Storage Stability	Store at -20°C. Recommended to aliquot into single-use vials. Supplied in 1X PBS (pH 7.4). BSA and Azide Free. Stable for 12 months from date of receipt.



Western blot analysis of extracts from K562, HeLa cells using db12115 at 1:1000.



Immunofluorescence analysis of HeLa cells labelling CDK6 with db12115.

The cells were fixed with 4% PFA (10min, RT) followed by treatment with 0.1% Triton X-100 (10min, RT), and blocked in 1% BSA/10% normal goat serum/0.3M glycine in 0.1% PBS-Tween 20 for 1h. The cells were then incubate with db12115 (1:200) at room temperature for 1h, followed by a further incubation at room temperature for 45min with Goat Anti Rabbit IgG (H+L)-AF488 db10005, shown in green). Nuclear DNA was labeled in blue with DAPI.

Control: Secondary antibody only.