

Recombinant

DGRmAb®

Phospho-c-Jun (Ser63) (DGR13611) Rabbit mAb (PBS Only)

db12132-PBS

Package : 10µg 100µg

Product Name : Phospho-c-Jun (Ser63) (DGR13611) Rabbit mAb (PBS Only)**Cat.No.:** db12132-PBS**Synonyms** : AP1; p39; AP-1; c-Jun**Application** : WB, IHC-P, ICC/IF**Reactivity** : Human,Mouse,Rat**Host species** : Rabbit**Background**

This gene is the putative transforming gene of avian sarcoma virus 17. It encodes a protein which is highly similar to the viral protein, and which interacts directly with specific target DNA sequences to regulate gene expression. This gene is intronless and is mapped to 1p32-p31, a chromosomal region involved in both translocations and deletions in human malignancies. [provided by RefSeq, Jul 2008]

Immunogen

A synthetic phosphopeptide corresponding to residues surrounding Ser63 of human c-Jun

Gene ID

3725

Swiss Prot

P05412

Synonyms

AP1; p39; AP-1; c-Jun

Reactivity

Human,Mouse,Rat

Application

WB, IHC-P, ICC/IF

Calculated MW

36 kDa

Observed MW

43 kDa

Host species

Rabbit

Clonality

Monoclonal

Clonality No.

DGR13611

Isotype

IgG

Purity

Affinity Purification

Conjugation

Un-conjugated

Concentration

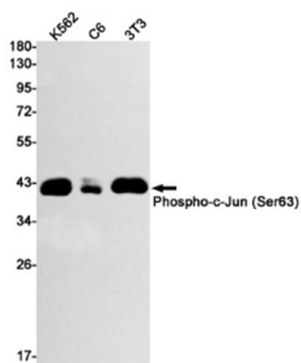
1 mg/mL

Formulation

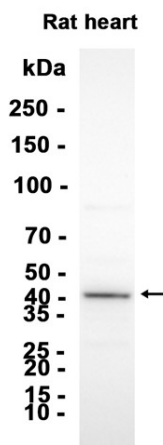
PBS Only

Storage Stability

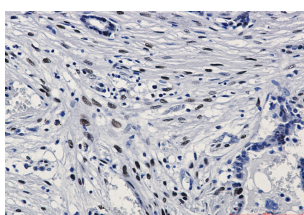
Store at -20°C. Recommended to aliquot into single-use vials. Supplied in 1X PBS (pH 7.4). BSA and Azide Free. Stable for 12 months from date of receipt.



Western blot detection of Phospho-c-Jun (Ser63) in K562, C6, 3T3 cell lysates using Phospho-c-Jun (Ser63) antibody (1:1000 diluted).



Western blot analysis of extracts from Rat heart tissue using db12132 at 1:1000.



Immunohistochemical analysis of paraffin-embedded human breast cancer using db12132 antibody.