

Recombinant

DGRmAb®

Bcl2 L14 (DGR32685) Rabbit mAb (PBS Only)

db12159-PBS

Package : 10µg 100µg

Product Name : Bcl2 L14 (DGR32685) Rabbit mAb (PBS Only)**Cat.No.:** db12159-PBS**Synonyms** : BCLG**Application** : WB, IHC-P, ICC/IF, FC, IP**Reactivity** : Human,Mouse,Rat**Host species** : Rabbit**Background**

The protein encoded by this gene belongs to the BCL2 protein family. BCL2 family members form hetero- or homodimers and act as anti- or pro-apoptotic regulators that are involved in a wide variety of cellular activities. Overexpression of this gene has been shown to induce apoptosis in cells. Three alternatively spliced transcript variants encoding two distinct isoforms have been reported for this gene. [provided by RefSeq, May 2009]

Immunogen

Recombinant protein of human Bcl G/BCL2L14

Gene ID

79370

Swiss Prot

Q9BZR8

Synonyms

BCLG

Reactivity

Human,Mouse,Rat

Application

WB, IHC-P, ICC/IF, FC, IP

Calculated MW

37 kDa

Observed MW

43 kDa

Host species

Rabbit

Clonality

Monoclonal

Clonality No.

DGR32685

Isotype

IgG

Purity

Affinity Purification

Conjugation

Un-conjugated

Concentration

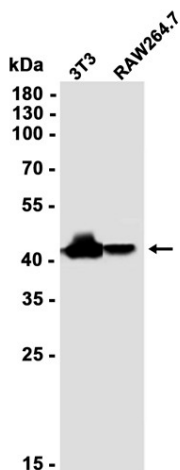
1 mg/mL

Formulation

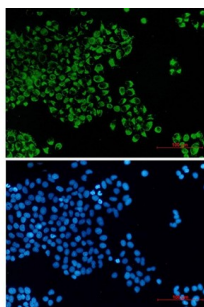
PBS Only

Storage Stability

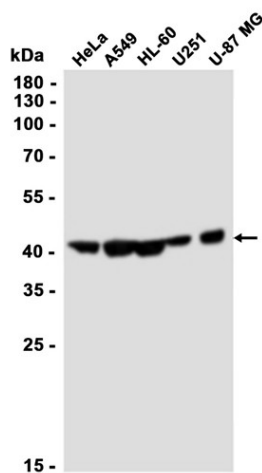
Store at -20°C. Recommended to aliquot into single-use vials. Supplied in 1X PBS (pH 7.4). BSA and Azide Free. Stable for 12 months from date of receipt.



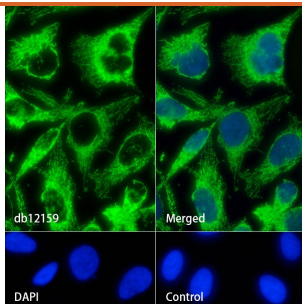
Western blot analysis of extracts from 3T3, RAW264.7 cells using [db12159](#) at 1:1000.



Immunofluorescent analysis of HeLa cells using [db12159](#) antibody (green), and DAPI (blue).



Western blot analysis of extracts from HeLa, A549, HL-60, U251, U-87 MG cells using [db12159](#) at 1:1000.



Immunofluorescence analysis of HeLa cells labelling Bcl2 L14 with [db12159](#).

The cells were fixed with 4% PFA (10min, RT) followed by treatment with 0.1% Triton X-100 (10min, RT), and blocked in 1% BSA/10% normal goat serum/0.3M glycine in 0.1% PBS-Tween 20 for 1h. The cells were then incubate with [db12159](#) (1:100) at room temperature for 1h, followed by a further incubation at room temperature for 45min with Goat Anti Rabbit IgG (H+L)-AF488 ([db10005](#), shown in green). Nuclear DNA was labeled in blue with DAPI.

Control: Secondary antibody only.