

Recombinant

DGRmAb®

alpha Skeletal Muscle Actin (DGR19186) Rabbit mAb (PBS Only)

db12197-PBS

Package : 10µg 100µg

Product Name : alpha Skeletal Muscle Actin (DGR19186) Rabbit mAb (PBS Only)**Cat.No.:** db12197-PBS**Synonyms** : ACTA; ASMA; CFTD; MPFD; NEM1; NEM2; NEM3; SHPM; CFTD1; CFTDM**Application** : WB, IHC-P, ICC/IF, FC**Reactivity** : Human,Mouse,Rat**Host species** : Rabbit**Background**

The product encoded by this gene belongs to the actin family of proteins, which are highly conserved proteins that play a role in cell motility, structure and integrity. Alpha, beta and gamma actin isoforms have been identified, with alpha actins being a major constituent of the contractile apparatus, while beta and gamma actins are involved in the regulation of cell motility. This actin is an alpha actin that is found in skeletal muscle. Mutations in this gene cause a variety of myopathies, including nemaline myopathy, congenital myopathy with excess of thin myofilaments, congenital myopathy with cores, and congenital myopathy with fiber-type disproportion, diseases that lead to muscle fiber defects with manifestations such as hypotonia. [provided by RefSeq, Sep 2019]

Immunogen

A synthetic peptide of human muscle Actin

Gene ID

58

Swiss Prot

P68133

Synonyms

ACTA; ASMA; CFTD; MPFD; NEM1; NEM2; NEM3; SHPM; CFTD1; CFTDM

Reactivity

Human,Mouse,Rat

Application

WB, IHC-P, ICC/IF, FC

Calculated MW

42 kDa

Observed MW

42 kDa

Host species

Rabbit

Clonality

Monoclonal

Clonality No.

DGR19186

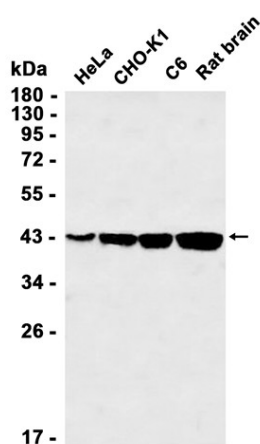
Isotype

IgG

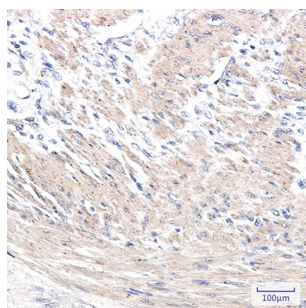
Purity

Affinity Purification

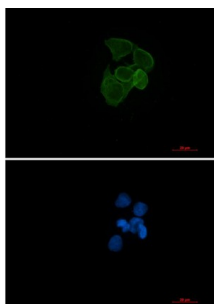
Conjugation	Un-conjugated
Concentration	1 mg/mL
Formulation	PBS Only
Storage Stability	Store at -20°C. Recommended to aliquot into single-use vials. Supplied in 1X PBS (pH 7.4). BSA and Azide Free. Stable for 12 months from date of receipt.



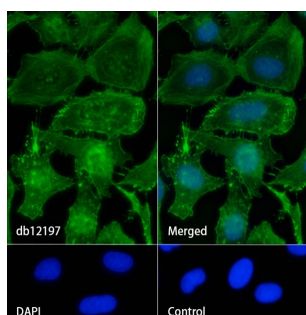
Western blot analysis of extracts from HeLa, CHO-K1, C6 cells and Rat brain tissue using [db12197](#) at 1:1000.



Immunohistochemical analysis of paraffin-embedded human colon cancer tissue using [db12197](#) antibody.



Immunofluorescent analysis of HeLa cells using [db12197](#) antibody (green), and DAPI (blue).



Immunofluorescence analysis of HeLa cells labelling alpha Skeletal Muscle Actin with [db12197](#).

The cells were fixed with cold 100% methanol (10min, 4°C) and blocked in 1% BSA/10% normal goat serum/0.3M glycine in 0.1% PBS-Tween 20 for 1h. The cells were then incubate with [db12197](#) (1:200) at room temprature for 1h, followed by a further incubation at room temperature for 45min with Goat Anti Rabbit IgG (H+L)-AF488 ([db10005](#), shown in green). Nuclear DNA was labeled in blue with DAPI.

Control: Secondary antibody only.