

Recombinant

DGRmAb®

**STAT5b (DGR32852) Rabbit mAb (PBS Only)**

db12203-PBS

Package : 10µg 100µg

**Product Name** : STAT5b (DGR32852) Rabbit mAb (PBS Only)**Cat.No.:** db12203-PBS**Synonyms** : STAT5**Application** : WB, IHC-P, ICC/IF, FC, IP**Reactivity** : Human,Mouse,Rat**Host species** : Rabbit**Background**

The protein encoded by this gene is a member of the STAT family of transcription factors. In response to cytokines and growth factors, STAT family members are phosphorylated by the receptor associated kinases, and then form homo- or heterodimers that translocate to the cell nucleus where they act as transcription activators. This protein mediates the signal transduction triggered by various cell ligands, such as IL2, IL4, CSF1, and different growth hormones. It has been shown to be involved in diverse biological processes, such as TCR signaling, apoptosis, adult mammary gland development, and sexual dimorphism of liver gene expression. This gene was found to fuse to retinoic acid receptor-alpha (RARA) gene in a small subset of acute promyelocytic leukemias (APLL). The dysregulation of the signaling pathways mediated by this protein may be the cause of the APLL. [provided by RefSeq, Jul 2008]

**Immunogen**

Recombinant protein of human STAT5b

**Gene ID**

6777

**Swiss Prot**

P51692

**Synonyms**

STAT5

**Reactivity**

Human,Mouse,Rat

**Application**

WB, IHC-P, ICC/IF, FC, IP

**Calculated MW**

90 kDa

**Observed MW**

90 kDa

**Host species**

Rabbit

**Clonality**

Monoclonal

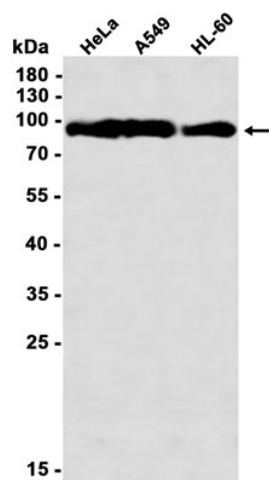
**Clonality No.**

DGR32852

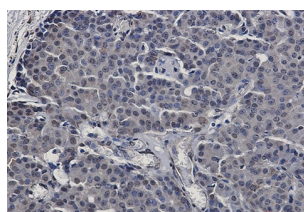
**Isotype**

IgG

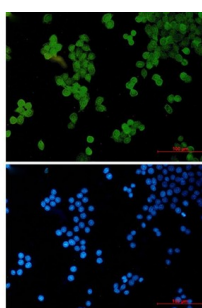
<b>Purity</b>	Affinity Purification
<b>Conjugation</b>	Un-conjugated
<b>Concentration</b>	1 mg/mL
<b>Formulation</b>	PBS Only
<b>Storage Stability</b>	Store at -20°C. Recommended to aliquot into single-use vials. Supplied in 1X PBS (pH 7.4). BSA and Azide Free. Stable for 12 months from date of receipt.



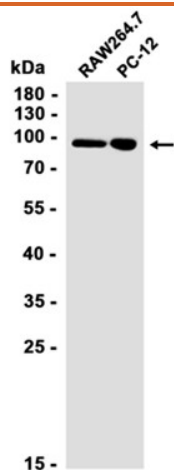
Western blot analysis of extracts from HeLa, A549, HL-60 cells using [db12203](#) at 1:1000.



Immunohistochemical analysis of paraffin-embedded human breast cancer using [db12203](#) antibody.



Immunofluorescent analysis of HeLa cells using [db12203](#) antibody (green), and DAPI (blue).



Western blot analysis of extracts from RAW264.7, PC-12 cells using [db12203](#) at 1:1000.