

Recombinant

DGRmAb®

Lipoamide Dehydrogenase (DGR11788) Rabbit mAb (PBS Only)

db12224-PBS

Package : 10µg 100µg

Product Name : Lipoamide Dehydrogenase (DGR11788) Rabbit mAb (PBS Only)**Cat.No.:** db12224-PBS**Synonyms** : E3; LAD; DLDD; DLDH; GCSL; PHE3**Application** : WB, IHC-P, ICC/IF**Reactivity** : Human,Mouse,Rat**Host species** : Rabbit**Background**

This gene encodes a member of the class-I pyridine nucleotide-disulfide oxidoreductase family. The encoded protein has been identified as a moonlighting protein based on its ability to perform mechanistically distinct functions. In homodimeric form, the encoded protein functions as a dehydrogenase and is found in several multi-enzyme complexes that regulate energy metabolism. However, as a monomer, this protein can function as a protease. Mutations in this gene have been identified in patients with E3-deficient maple syrup urine disease and lipoamide dehydrogenase deficiency. Alternative splicing results in multiple transcript variants. [provided by RefSeq, Jan 2014]

Immunogen

A synthetic peptide of human Lipoamide Dehydrogenase

Gene ID

1738

Swiss Prot

P09622

Synonyms

E3; LAD; DLDD; DLDH; GCSL; PHE3

Reactivity

Human,Mouse,Rat

Application

WB, IHC-P, ICC/IF

Calculated MW

54 kDa

Observed MW

54 kDa

Host species

Rabbit

Clonality

Monoclonal

Clonality No.

DGR11788

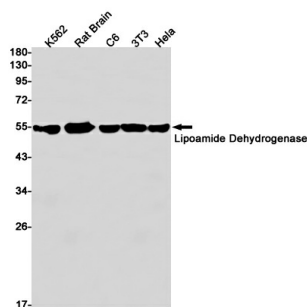
Isotype

IgG

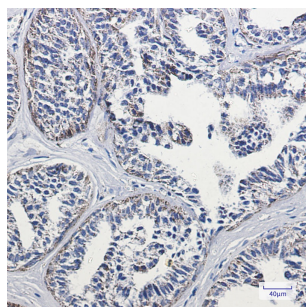
Purity

Affinity Purification

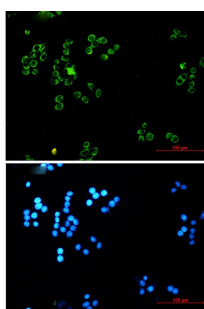
| | |
|--------------------------|---|
| Conjugation | Un-conjugated |
| Concentration | 1 mg/mL |
| Formulation | PBS Only |
| Storage Stability | Store at -20°C. Recommended to aliquot into single-use vials. Supplied in 1X PBS (pH 7.4). BSA and Azide Free. Stable for 12 months from date of receipt. |



Western blot detection of Lipoamide Dehydrogenase in K562, Rat Brain, C6, 3T3, HeLa cell lysates using Lipoamide Dehydrogenase antibody (1:1000 diluted).



Immunohistochemical analysis of paraffin-embedded human breast cancer tissue using [db12224](#) antibody.



Immunofluorescent analysis of HeLa cells using [db12224](#) antibody (green), and DAPI (blue).