

Recombinant

DGRmAb®

## PP2A alpha/beta (DGR14453) Rabbit mAb (PBS Only)

db12340-PBS

Package : 10µg 100µg

**Product Name** : PP2A alpha/beta (DGR14453) Rabbit mAb (PBS Only)**Cat.No.:** db12340-PBS**Synonyms** : RP-C; PP2Ac; PP2CA; PP2Calpha**Application** : WB, IHC-P, ICC/IF, FC**Reactivity** : Human,Mouse,Rat**Host species** : Rabbit**Background**

This gene encodes the phosphatase 2A catalytic subunit. Protein phosphatase 2A is one of the four major Ser/Thr phosphatases, and it is implicated in the negative control of cell growth and division. It consists of a common heteromeric core enzyme, which is composed of a catalytic subunit and a constant regulatory subunit, that associates with a variety of regulatory subunits. This gene encodes an alpha isoform of the catalytic subunit. [provided by RefSeq, Jul 2008]

**Immunogen**

A synthetic peptide of human PP2A alpha

**Gene ID**

5515

**Swiss Prot**

P67775

**Synonyms**

RP-C; PP2Ac; PP2CA; PP2Calpha

**Reactivity**

Human,Mouse,Rat

**Application**

WB, IHC-P, ICC/IF, FC

**Calculated MW**

36 kDa

**Observed MW**

36 kDa

**Host species**

Rabbit

**Clonality**

Monoclonal

**Clonality No.**

DGR14453

**Isotype**

IgG

**Purity**

Affinity Purification

**Conjugation**

Un-conjugated

**Concentration**

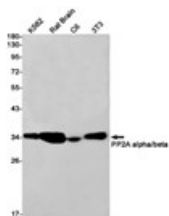
1 mg/mL

**Formulation**

PBS Only

**Storage Stability**

Store at -20°C. Recommended to aliquot into single-use vials. Supplied in 1X PBS (pH 7.4). BSA and Azide Free. Stable for 12 months from date of receipt.



Western blot detection of PP2A alpha/beta in K562,Rat Brain,C6,3T3 cell lysates using PP2A alpha/beta antibody(1:1000 diluted).

Western blot analysis of extracts from HepG2, RAW264.7 cells and Rat muscle tissue using [db12340](#) at 1:1000.