

Recombinant

DGRmAb®

**ABCE1 (DGR11795) Rabbit mAb (PBS Only)**

db12374-PBS

Package : 10µg 100µg

**Product Name** : ABCE1 (DGR11795) Rabbit mAb (PBS Only)**Cat.No.:** db12374-PBS**Synonyms** : RLI; OABP; RLI1; ABC38; RNS4I; RNASEL1; RNASELI**Application** : WB, IHC-P, ICC/IF, FC, IP**Reactivity** : Human,Mouse,Rat**Host species** : Rabbit**Background**

The protein encoded by this gene is a member of the superfamily of ATP-binding cassette (ABC) transporters. ABC proteins transport various molecules across extra- and intra-cellular membranes. ABC genes are divided into seven distinct subfamilies (ABC1, MDR/TAP, MRP, ALD, OABP, GCN20, White). This protein is a member of the OABP subfamily. Alternatively referred to as the RNase L inhibitor, this protein functions to block the activity of ribonuclease L. Activation of ribonuclease L leads to inhibition of protein synthesis in the 2-5A/RNase L system, the central pathway for viral interferon action. Two transcript variants encoding the same protein have been found for this gene. [provided by RefSeq, Jul 2008]

**Immunogen**

A synthetic peptide of human ABCE1

**Gene ID**

6059

**Swiss Prot**

P61221

**Synonyms**

RLI; OABP; RLI1; ABC38; RNS4I; RNASEL1; RNASELI

**Reactivity**

Human,Mouse,Rat

**Application**

WB, IHC-P, ICC/IF, FC, IP

**Calculated MW**

67 kDa

**Observed MW**

67 kDa

**Host species**

Rabbit

**Clonality**

Monoclonal

**Clonality No.**

DGR11795

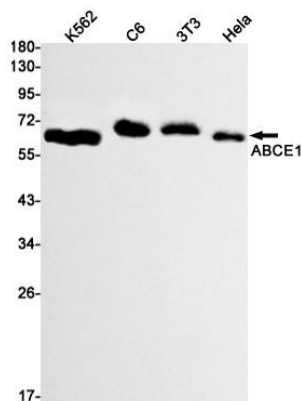
**Isotype**

IgG

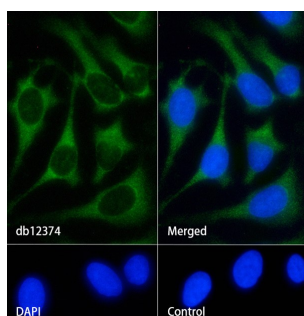
**Purity**

Affinity Purification

<b>Conjugation</b>	Un-conjugated
<b>Concentration</b>	1 mg/mL
<b>Formulation</b>	PBS Only
<b>Storage Stability</b>	Store at -20°C. Recommended to aliquot into single-use vials. Supplied in 1X PBS (pH 7.4). BSA and Azide Free. Stable for 12 months from date of receipt.



Western blot detection of ABCE1 in K562, C6, 3T3, HeLa cell lysates using ABCE1 antibody (1:1000 diluted).



Immunofluorescence analysis of HeLa cells labelling ABCE1 with [db12374](#).

The cells were fixed with cold 100% methanol (10min, 4°C) and blocked in 1% BSA/10% normal goat serum/0.3M glycine in 0.1% PBS-Tween 20 for 1h. The cells were then incubate with [db12374](#) (1:100) at room temprature for 1h, followed by a further incubation at room temperature for 45min with Goat Anti Rabbit IgG (H+L)-AF488 [db10005](#), shown in green). Nuclear DNA was labeled in blue with DAPI.

Control: Secondary antibody only.