

Recombinant

DGRmAb®

ARFRP1 (DGR11549) Rabbit mAb (PBS Only)

db12449-PBS

Package : 10µg 100µg

Product Name : ARFRP1 (DGR11549) Rabbit mAb (PBS Only)**Cat.No.:** db12449-PBS**Synonyms** : ARP; Arp1; ARL18**Application** : WB, ICC/IF**Reactivity** : Human,Mouse,Rat**Host species** : Rabbit**Background**

The protein encoded by this gene is a membrane-associated GTP-ase which localizes to the plasma membrane and is related to the ADP-ribosylation factor (ARF) and ARF-like (ARL) proteins. This gene plays a role in membrane trafficking between the trans-Golgi network and endosomes. Alternatively spliced transcript variants encoding different isoforms have been identified. [provided by RefSeq, May 2012]

Immunogen

A synthetic peptide of human ARFRP1

Gene ID

10139

Swiss Prot

Q13795

Synonyms

ARP; Arp1; ARL18

Reactivity

Human,Mouse,Rat

Application

WB, ICC/IF

Calculated MW

23 kDa

Observed MW

23 kDa

Host species

Rabbit

Clonality

Monoclonal

Clonality No.

DGR11549

Isotype

IgG

Purity

Affinity Purification

Conjugation

Un-conjugated

Concentration

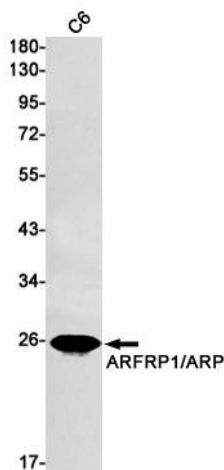
1 mg/mL

Formulation

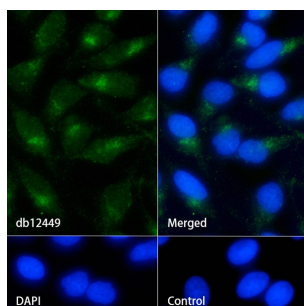
PBS Only

Storage Stability

Store at -20°C. Recommended to aliquot into single-use vials. Supplied in 1X PBS (pH 7.4). BSA and Azide Free. Stable for 12 months from date of receipt.



Western blot detection of ARFRP1/ARP in C6 cell lysates using ARFRP1/ARP antibody(1:1000 diluted).



Immunofluorescence analysis of HeLa cells labelling ARFRP1 with [db12449](#).

The cells were fixed with 4% PFA (10min, RT) followed by treatment with 0.1% Triton X-100 (10min, RT), and blocked in 1% BSA/10% normal goat serum/0.3M glycine in 0.1% PBS-Tween 20 for 1h. The cells were then incubate with [db12449](#) (1:200) at room temprature for 1h, followed by a further incubation at room temperature for 45min with Goat Anti Rabbit IgG (H+L)-AF488 [db10005](#), shown in green). Nuclear DNA was labeled in blue with DAPI.

Control: Secondary antibody only.