

Recombinant

DGRmAb®

STAT1 (DGR19370) Rabbit mAb (PBS Only)

db12458-PBS

Package : 10µg 100µg

Product Name : STAT1 (DGR19370) Rabbit mAb (PBS Only)**Cat.No.:** db12458-PBS**Synonyms** : CANDF7; IMD31A; IMD31B; IMD31C; ISGF-3; STAT91**Application** : WB, IHC-P, ICC/IF, FC, IP**Reactivity** : Human**Host species** : Rabbit**Background**

The protein encoded by this gene is a member of the STAT protein family. In response to cytokines and growth factors, STAT family members are phosphorylated by the receptor associated kinases, and then form homo- or heterodimers that translocate to the cell nucleus where they act as transcription activators. This protein can be activated by various ligands including interferon-alpha, interferon-gamma, EGF, PDGF and IL6. This protein mediates the expression of a variety of genes, which is thought to be important for cell viability in response to different cell stimuli and pathogens. Two alternatively spliced transcript variants encoding distinct isoforms have been described. [provided by RefSeq, Jul 2008]

Immunogen

A synthetic peptide of human STAT1

Gene ID

6772

Swiss Prot

P42224

Synonyms

CANDF7; IMD31A; IMD31B; IMD31C; ISGF-3; STAT91

Reactivity

Human

Application

WB, IHC-P, ICC/IF, FC, IP

Calculated MW

87 kDa

Observed MW

87 kDa

Host species

Rabbit

Clonality

Monoclonal

Clonality No.

DGR19370

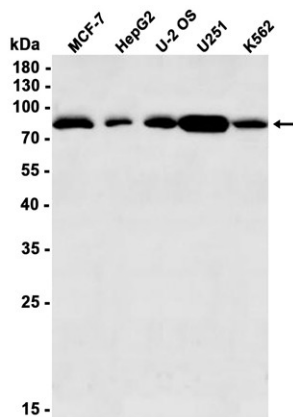
Isotype

IgG

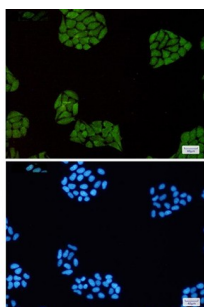
Purity

Affinity Purification

Conjugation	Un-conjugated
Concentration	1 mg/mL
Formulation	PBS Only
Storage Stability	Store at -20°C. Recommended to aliquot into single-use vials. Supplied in 1X PBS (pH 7.4). BSA and Azide Free. Stable for 12 months from date of receipt.



Western blot analysis of extracts from MCF-7, HepG2, U-2 OS, U251, K562 cells using [db12458](#) at 1:500.



Immunofluorescent analysis of HeLa cells using [db12458](#) antibody (green), and DAPI (blue).