

Recombinant

DGRmAb®

Estrogen Receptor alpha (DGR11560) Rabbit mAb (PBS Only)

db12490-PBS

Package : 100µg

Product Name : Estrogen Receptor alpha (DGR11560) Rabbit mAb (PBS Only)**Cat.No.:** db12490-PBS**Synonyms** : ER; ESR; Era; ESRA; ESTRR; NR3A1**Application** : WB, IHC-P, ICC/IF, FC**Reactivity** : Human,Mouse,Rat**Host species** : Rabbit**Background**

This gene encodes an estrogen receptor, a ligand-activated transcription factor composed of several domains important for hormone binding, DNA binding, and activation of transcription. The protein localizes to the nucleus where it may form a homodimer or a heterodimer with estrogen receptor 2. Estrogen and its receptors are essential for sexual development and reproductive function, but also play a role in other tissues such as bone. Estrogen receptors are also involved in pathological processes including breast cancer, endometrial cancer, and osteoporosis. Alternative promoter usage and alternative splicing result in dozens of transcript variants, but the full-length nature of many of these variants has not been determined. [provided by RefSeq, Mar 2014]

Immunogen

A synthetic peptide of human Estrogen Receptor alpha

Gene ID

2099

Swiss Prot

P03372

Synonyms

ER; ESR; Era; ESRA; ESTRR; NR3A1

Reactivity

Human,Mouse,Rat

Application

WB, IHC-P, ICC/IF, FC

Calculated MW

66 kDa

Observed MW

66 kDa

Host species

Rabbit

Clonality

Monoclonal

Clonality No.

DGR11560

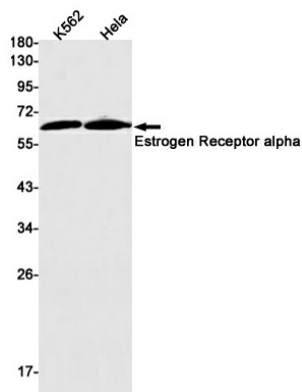
Isotype

IgG

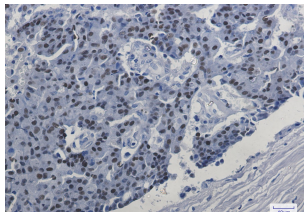
Purity

Affinity Purification

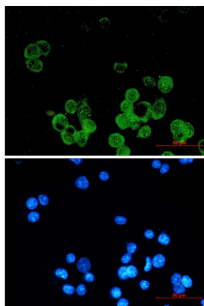
Conjugation	Un-conjugated
Concentration	1 mg/mL
Formulation	PBS Only
Storage Stability	Store at -20°C. Recommended to aliquot into single-use vials. Supplied in 1X PBS (pH 7.4). BSA and Azide Free. Stable for 12 months from date of receipt.



Western blot detection of Estrogen Receptor alpha in K562,HeLa cell lysates using Estrogen Receptor alpha antibody(1:1000 diluted).



Immunohistochemical analysis of paraffin-embedded human breast cancer using [db12490](#) antibody.



Immunofluorescent analysis of MCF-7 cells using [db12490](#) antibody (green), and DAPI (blue).