

Recombinant

DGRmAb®

Phospho-c-Myc (Ser62) (DGR15684) Rabbit mAb (PBS Only)

db12497-PBS

Package : 10µg 100µg

Product Name : Phospho-c-Myc (Ser62) (DGR15684) Rabbit mAb (PBS Only)**Cat.No.:** db12497-PBS**Synonyms** : MRTL; MYCC; c-Myc; bHLHe39**Application** : WB, IHC-P, ICC/IF, FC, IP**Reactivity** : Human,Mouse,Rat**Host species** : Rabbit**Background**

This gene is a proto-oncogene and encodes a nuclear phosphoprotein that plays a role in cell cycle progression, apoptosis and cellular transformation. The encoded protein forms a heterodimer with the related transcription factor MAX. This complex binds to the E box DNA consensus sequence and regulates the transcription of specific target genes. Amplification of this gene is frequently observed in numerous human cancers. Translocations involving this gene are associated with Burkitt lymphoma and multiple myeloma in human patients. There is evidence to show that translation initiates both from an upstream, in-frame non-AUG (CUG) and a downstream AUG start site, resulting in the production of two isoforms with distinct N-termini. [provided by RefSeq, Aug 2017]

Immunogen

A synthetic phosphopeptide corresponding to residues surrounding Ser62 of human c-Myc

Gene ID

4609

Swiss Prot

P01106

Synonyms

MRTL; MYCC; c-Myc; bHLHe39

Reactivity

Human,Mouse,Rat

Application

WB, IHC-P, ICC/IF, FC, IP

Calculated MW

49 kDa

Observed MW

57 kDa

Host species

Rabbit

Clonality

Monoclonal

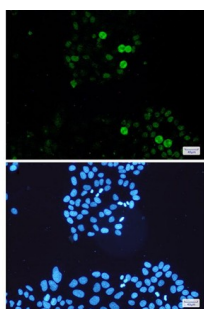
Clonality No.

DGR15684

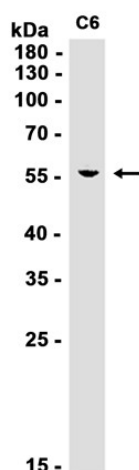
Isotype

IgG

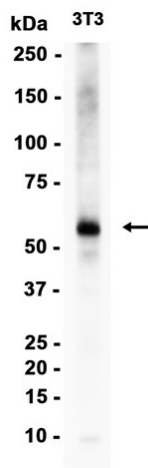
Purity	Affinity Purification
Conjugation	Un-conjugated
Concentration	1 mg/mL
Formulation	PBS Only
Storage Stability	Store at -20°C. Recommended to aliquot into single-use vials. Supplied in 1X PBS (pH 7.4). BSA and Azide Free. Stable for 12 months from date of receipt.



Immunofluorescent analysis of HeLa cells using [db12497](#) antibody (green), and DAPI (blue).



Western blot analysis of extracts from C6 cells using [db12497](#) at 1:1000.



Western blot analysis of extracts from 3T3 cells using [db12497](#) at 1:1000.