

Recombinant

DGRmAb®

**CDK1 (DGR14384) Rabbit mAb (PBS Only)**

db12527-PBS

Package : 10µg 100µg

**Product Name** : CDK1 (DGR14384) Rabbit mAb (PBS Only)**Cat.No.:** db12527-PBS**Synonyms** : CDC2; CDC28A; P34CDC2**Application** : WB, IHC-P, ICC/IF, FC, IP**Reactivity** : Human**Host species** : Rabbit**Background**

The protein encoded by this gene is a member of the Ser/Thr protein kinase family. This protein is a catalytic subunit of the highly conserved protein kinase complex known as M-phase promoting factor (MPF), which is essential for G1/S and G2/M phase transitions of eukaryotic cell cycle. Mitotic cyclins stably associate with this protein and function as regulatory subunits. The kinase activity of this protein is controlled by cyclin accumulation and destruction through the cell cycle. The phosphorylation and dephosphorylation of this protein also play important regulatory roles in cell cycle control. Alternatively spliced transcript variants encoding different isoforms have been found for this gene. [provided by RefSeq, Mar 2009]

**Immunogen**

A synthetic peptide of human CDK1

**Gene ID**

983

**Swiss Prot**

P06493

**Synonyms**

CDC2; CDC28A; P34CDC2

**Reactivity**

Human

**Application**

WB, IHC-P, ICC/IF, FC, IP

**Calculated MW**

34 kDa

**Observed MW**

34 kDa

**Host species**

Rabbit

**Clonality**

Monoclonal

**Clonality No.**

DGR14384

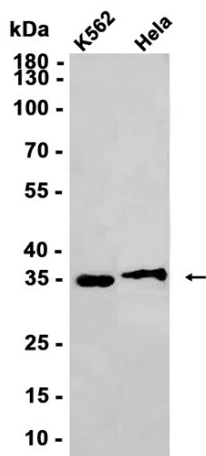
**Isotype**

IgG

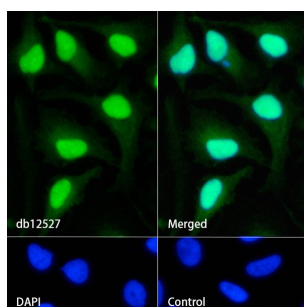
**Purity**

Affinity Purification

<b>Conjugation</b>	Un-conjugated
<b>Concentration</b>	1 mg/mL
<b>Formulation</b>	PBS Only
<b>Storage Stability</b>	Store at -20°C. Recommended to aliquot into single-use vials. Supplied in 1X PBS (pH 7.4). BSA and Azide Free. Stable for 12 months from date of receipt.



Western blot analysis of extracts from K562, HeLa cells using [db12527](#) at 1:1000.



Immunofluorescence analysis of HeLa cells labelling CDK1 with [db12527](#).

The cells were fixed with 4% PFA (10min, RT) followed by treatment with 0.1% Triton X-100 (10min, RT), and blocked in 1% BSA/10% normal goat serum/0.3M glycine in 0.1% PBS-Tween 20 for 1h. The cells were then incubate with [db12527](#) (1:100) at room temperature for 1h, followed by a further incubation at room temperature for 45min with Goat Anti Rabbit IgG (H+L)-AF488 [db10005](#), shown in green). Nuclear DNA was labeled in blue with DAPI.

Control: Secondary antibody only.