

Recombinant

DGRmAb®

CSHL1 (DGR20787) Rabbit mAb (PBS Only)

db12531-PBS

Package : 10µg 100µg

Product Name : CSHL1 (DGR20787) Rabbit mAb (PBS Only)**Cat.No.:** db12531-PBS**Synonyms** : CSL; CS-5; GHB4; CSHP1; hCS-L**Application** : WB, IHC-P**Reactivity** : Human**Host species** : Rabbit**Background**

The protein encoded by this gene is a member of the somatotropin/prolactin family of hormones which play an important role in growth control. The gene, along with four other related genes, is located at the growth hormone locus on chromosome 17 where they are interspersed in the same transcriptional orientation; an arrangement which is thought to have evolved by a series of gene duplications. Although the five genes share a remarkably high degree of sequence identity, they are expressed selectively in different tissues. This particular family member is expressed in placental villi, although it was originally thought to be a pseudogene. In fact, alternative splicing suggests that the majority of the transcripts would be unable to express a secreted protein. Alternatively spliced transcript variants encoding different isoforms have been identified. [provided by RefSeq, Jul 2008]

Immunogen

Recombinant protein of human CSHL1

Gene ID

1444

Swiss Prot

Q14406

Synonyms

CSL; CS-5; GHB4; CSHP1; hCS-L

Reactivity

Human

Application

WB, IHC-P

Calculated MW

25 kDa

Observed MW

25 kDa

Host species

Rabbit

Clonality

Monoclonal

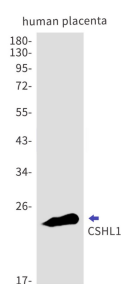
Clonality No.

DGR20787

Isotype

IgG

Purity	Affinity Purification
Conjugation	Un-conjugated
Concentration	1 mg/mL
Formulation	PBS Only
Storage Stability	Store at -20°C. Recommended to aliquot into single-use vials. Supplied in 1X PBS (pH 7.4). BSA and Azide Free. Stable for 12 months from date of receipt.



Western blot detection of CSHL1 in human placenta cell lysates using CSHL1 antibody(1:1000 diluted).