

Recombinant

DGRmAb®

Phospho-PKC (Ser660) (DGR33934) Rabbit mAb (PBS Only)

db12603-PBS

Package : 10µg 100µg

Product Name : Phospho-PKC (Ser660) (DGR33934) Rabbit mAb (PBS Only)**Cat.No.:** db12603-PBS**Synonyms** : AAG6; PKCA; PRKACA; PKCI+/-; PKCalpha; PKC-alpha**Application** : WB, IHC-P**Reactivity** : Human,Mouse,Rat**Host species** : Rabbit**Background**

Protein kinase C (PKC) is a family of serine- and threonine-specific protein kinases that can be activated by calcium and the second messenger diacylglycerol. PKC family members phosphorylate a wide variety of protein targets and are known to be involved in diverse cellular signaling pathways. PKC family members also serve as major receptors for phorbol esters, a class of tumor promoters. Each member of the PKC family has a specific expression profile and is believed to play a distinct role in cells. The protein encoded by this gene is one of the PKC family members. This kinase has been reported to play roles in many different cellular processes, such as cell adhesion, cell transformation, cell cycle checkpoint, and cell volume control. Knockout studies in mice suggest that this kinase may be a fundamental regulator of cardiac contractility and Ca(2+) handling in myocytes. [provided by RefSeq, Jul 2008]

Immunogen

A synthetic phosphopeptide corresponding to residues surrounding Ser660 of human PKC

Gene ID

5578,5579,5580,5581,5583,5588

Swiss Prot

P17252,P05771,P05771-2,Q05655,Q02156,P24723,Q04759

Synonyms

AAG6; PKCA; PRKACA; PKCI+/-; PKCalpha; PKC-alpha

Reactivity

Human,Mouse,Rat

Application

WB, IHC-P

Calculated MW

78 kDa

Observed MW

78-85 kDa

Host species

Rabbit

Clonality

Monoclonal

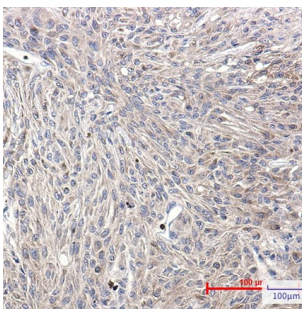
Clonality No.

DGR33934

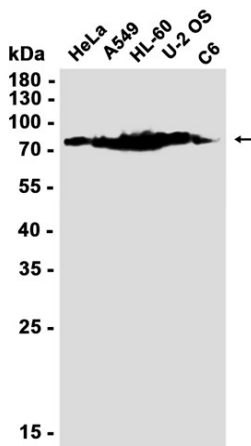
Isotype

IgG

Purity	Affinity Purification
Conjugation	Un-conjugated
Concentration	1 mg/mL
Formulation	PBS Only
Storage Stability	Store at -20°C. Recommended to aliquot into single-use vials. Supplied in 1X PBS (pH 7.4). BSA and Azide Free. Stable for 12 months from date of receipt.



Immunohistochemical analysis of paraffin-embedded human Brain using [db12603](#) antibody.



Western blot analysis of extracts from HeLa, A549, HL-60, U-2 OS, C6 cells using [db12603](#) at 1:1000.