

Recombinant

DGRmAb®

STAT3 (DGR12197) Rabbit mAb (PBS Only)

db12896-PBS

Package : 10µg 100µg

Product Name : STAT3 (DGR12197) Rabbit mAb (PBS Only)**Cat.No.:** db12896-PBS**Synonyms** : APRF; HIES; ADMIO; ADMIO1**Application** : WB, ICC/IF, FC, IP**Reactivity** : Human**Host species** : Rabbit**Background**

The protein encoded by this gene is a member of the STAT protein family. In response to cytokines and growth factors, STAT family members are phosphorylated by the receptor associated kinases, and then form homo- or heterodimers that translocate to the cell nucleus where they act as transcription activators. This protein is activated through phosphorylation in response to various cytokines and growth factors including IFNs, EGF, IL5, IL6, HGF, LIF and BMP2. This protein mediates the expression of a variety of genes in response to cell stimuli, and thus plays a key role in many cellular processes such as cell growth and apoptosis. The small GTPase Rac1 has been shown to bind and regulate the activity of this protein. PIAS3 protein is a specific inhibitor of this protein. Mutations in this gene are associated with infantile-onset multisystem autoimmune disease and hyper-immunoglobulin E syndrome. Alternative splicing results in multiple transcript variants encoding distinct isoforms. [provided by RefSeq, Sep 2015]

Immunogen

A synthetic peptide of human STAT3

Gene ID

6774

Swiss Prot

P40763

Synonyms

APRF; HIES; ADMIO; ADMIO1

Reactivity

Human

Application

WB, ICC/IF, FC, IP

Calculated MW

88 kDa

Observed MW

88 kDa

Host species

Rabbit

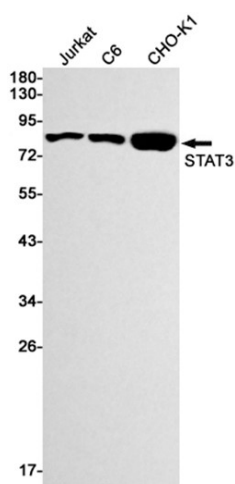
Clonality

Monoclonal

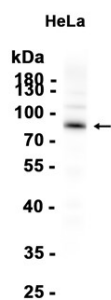
Clonality No.

DGR12197

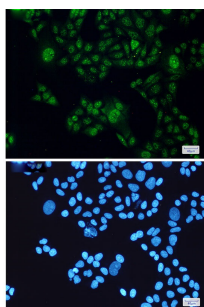
Isotype	IgG
Purity	Affinity Purification
Conjugation	Un-conjugated
Concentration	1 mg/mL
Formulation	PBS Only
Storage Stability	Store at -20°C. Recommended to aliquot into single-use vials. Supplied in 1X PBS (pH 7.4). BSA and Azide Free. Stable for 12 months from date of receipt.



Western blot detection of STAT3 in Jurkat, C6, CHO-K1 cell lysates using STAT3 antibody (1:1000 diluted).



Western blot analysis of extracts from HeLa cells using db12896 at 1:1000.



Immunofluorescent analysis of HeLa cells using db12896 antibody (green), and DAPI (blue).

