

Recombinant

DGRmAb®

## TRAF6 (DGR14750) Rabbit mAb (PBS Only)

db12997-PBS

Package : 10µg 100µg

**Product Name :** TRAF6 (DGR14750) Rabbit mAb (PBS Only)

**Cat.No.:** db12997-PBS

**Synonyms :** RNF85; MGC:3310

**Application :** WB, IHC-P, ICC/IF

**Reactivity :** Human,Mouse,Rat

**Host species :** Rabbit

### Background

The protein encoded by this gene is a member of the TNF receptor associated factor (TRAF) protein family. TRAF proteins are associated with, and mediate signal transduction from, members of the TNF receptor superfamily. This protein mediates signaling from members of the TNF receptor superfamily as well as the Toll/IL-1 family. Signals from receptors such as CD40, TNFSF11/RANCE and IL-1 have been shown to be mediated by this protein. This protein also interacts with various protein kinases including IRAK1/IRAK, SRC and PKCzeta, which provides a link between distinct signaling pathways. This protein functions as a signal transducer in the NF-kappaB pathway that activates I kappaB kinase (IKK) in response to proinflammatory cytokines. The interaction of this protein with UBE2N/UBC13, and UBE2V1/UEV1A, which are ubiquitin conjugating enzymes catalyzing the formation of polyubiquitin chains, has been found to be required for IKK activation by this protein. This protein also interacts with the transforming growth factor (TGF) beta receptor complex and is required for Smad-independent activation of the JNK and p38 kinases. This protein has an amino terminal RING domain which is followed by four zinc-finger motifs, a central coiled-coil region and a highly conserved carboxyl terminal domain, known as the TRAF-C domain. Two alternatively spliced transcript variants, encoding an identical protein, have been reported. [provided by RefSeq, Feb 2012]

**Immunogen** A synthetic peptide of human TRAF6

**Gene ID** 7189, 22034, 311245

**Swiss Prot** Q9Y4K3, P70196, B5DF45

**Synonyms** RNF85; MGC:3310

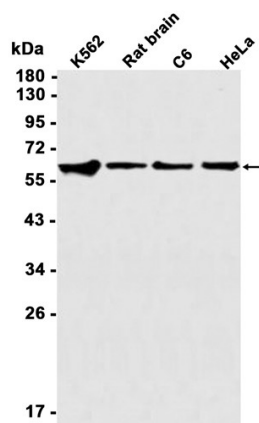
**Reactivity** Human,Mouse,Rat

**Application** WB, IHC-P, ICC/IF

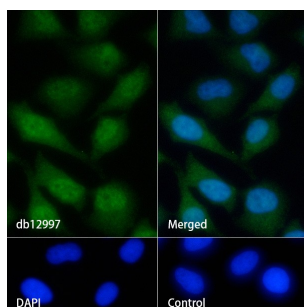
**Calculated MW** 60 kDa

**Observed MW** 60 kDa

<b>Host species</b>	Rabbit
<b>Clonality</b>	Monoclonal
<b>Clonality No.</b>	DGR14750
<b>Isotype</b>	IgG
<b>Purity</b>	Affinity Purification
<b>Conjugation</b>	Un-conjugated
<b>Concentration</b>	1 mg/mL
<b>Formulation</b>	PBS Only
<b>Storage Stability</b>	Store at -20°C. Recommended to aliquot into single-use vials. Supplied in 1X PBS (pH 7.4). BSA and Azide Free. Stable for 12 months from date of receipt.



Western blot analysis of extracts from K562, C6, HeLa cells and Rat brain tissue using [db12997](#) at 1:1000.



Immunofluorescence analysis of HeLa cells labelling TRAF6 with [db12997](#).

The cells were fixed with 4% PFA (10min, RT) followed by treatment with 0.1% Triton X-100 (10min, RT), and blocked in 1% BSA/10% normal goat serum/0.3M glycine in 0.1% PBS-Tween 20 for 1h. The cells were then incubate with [db12997](#) (1:50) at room temperature for 1h, followed by a further incubation at room temperature for 45min with Goat Anti Rabbit IgG (H+L)-AF488 ([db10005](#), shown in green). Nuclear DNA was labeled in blue with DAPI.

Control: Secondary antibody only.