

Recombinant

DGRmAb®

p27 KIP 1 (DGR14485) Rabbit mAb (PBS Only)

db13072-PBS

Package : 10µg 100µg

Product Name : p27 KIP 1 (DGR14485) Rabbit mAb (PBS Only)**Cat.No.:** db13072-PBS**Synonyms** : KIP1; MEN4; CDKN4; MEN1B; P27KIP1**Application** : WB, IHC-P, ICC/IF, FC, IP**Reactivity** : Human,Mouse,Rat**Host species** : Rabbit**Background**

This gene encodes a cyclin-dependent kinase inhibitor, which shares a limited similarity with CDK inhibitor CDKN1A/p21. The encoded protein binds to and prevents the activation of cyclin E-CDK2 or cyclin D-CDK4 complexes, and thus controls the cell cycle progression at G1. The degradation of this protein, which is triggered by its CDK dependent phosphorylation and subsequent ubiquitination by SCF complexes, is required for the cellular transition from quiescence to the proliferative state. Mutations in this gene are associated with multiple endocrine neoplasia type IV (MEN4). [provided by RefSeq, Apr 2014]

Immunogen

A synthetic peptide of human p27 KIP 1

Gene ID

1027

Swiss Prot

P46527

Synonyms

KIP1; MEN4; CDKN4; MEN1B; P27KIP1

Reactivity

Human,Mouse,Rat

Application

WB, IHC-P, ICC/IF, FC, IP

Calculated MW

22 kDa

Observed MW

27 kDa

Host species

Rabbit

Clonality

Monoclonal

Clonality No.

DGR14485

Isotype

IgG

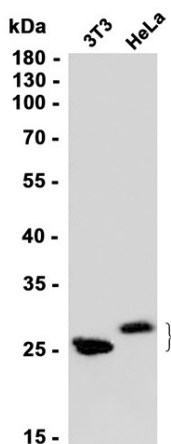
Purity

Affinity Purification

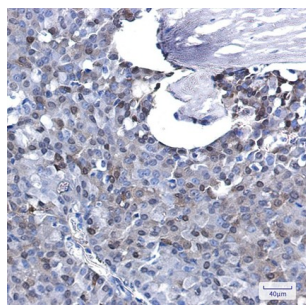
Conjugation

Un-conjugated

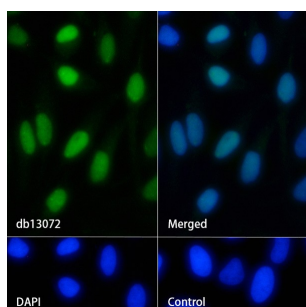
Concentration	1 mg/mL
Formulation	PBS Only
Storage Stability	Store at -20°C. Recommended to aliquot into single-use vials. Supplied in 1X PBS (pH 7.4). BSA and Azide Free. Stable for 12 months from date of receipt.



Western blot analysis of extracts from 3T3, HeLa cells using [db13072](#) at 1:1000.



Immunohistochemical analysis of paraffin-embedded human breast cancer using [db13072](#) antibody.



Immunofluorescence analysis of HeLa cells labelling p27 KIP 1 with [db13072](#).

The cells were fixed with 4% PFA (10min, RT) followed by treatment with 0.1% Triton X-100 (10min, RT), and blocked in 1% BSA/10% normal goat serum/0.3M glycine in 0.1% PBS-Tween 20 for 1h. The cells were then incubate with [db13072](#) (1:100) at room temperature for 1h, followed by a further incubation at room temperature for 45min with Goat Anti Rabbit IgG (H+L)-AF488 ([db10005](#), shown in green). Nuclear DNA was labeled in blue with DAPI.

Control: Secondary antibody only.