

Recombinant

DGRmAb®

## Lamin B1 (DGR11146) Rabbit mAb (PBS Only)

db13127-PBS

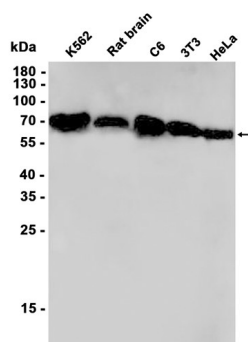
Package : 10µg 100µg

**Product Name** : Lamin B1 (DGR11146) Rabbit mAb (PBS Only)**Cat.No.:** db13127-PBS**Synonyms** : LMN; ADLD; LMN2; LMNB**Application** : WB, ICC/IF, FC**Reactivity** : Human, Mouse, Rat**Host species** : Rabbit

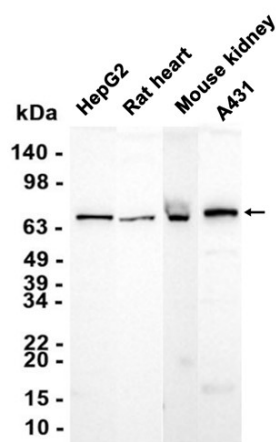
<b>Background</b>	This gene encodes one of the two B-type lamin proteins and is a component of the nuclear lamina. A duplication of this gene is associated with autosomal dominant adult-onset leukodystrophy (ADLD). Alternative splicing results in multiple transcript variants. [provided by RefSeq, Dec 2015]
<b>Immunogen</b>	A synthetic peptide of human Lamin B1
<b>Gene ID</b>	4001
<b>Swiss Prot</b>	P20700
<b>Synonyms</b>	LMN; ADLD; LMN2; LMNB
<b>Reactivity</b>	Human, Mouse, Rat
<b>Application</b>	WB, ICC/IF, FC
<b>Calculated MW</b>	66 kDa
<b>Observed MW</b>	70 kDa
<b>Host species</b>	Rabbit
<b>Clonality</b>	Monoclonal
<b>Clonality No.</b>	DGR11146
<b>Isotype</b>	IgG
<b>Purity</b>	Affinity Purification
<b>Conjugation</b>	Un-conjugated
<b>Concentration</b>	1 mg/mL
<b>Formulation</b>	PBS Only

**Storage Stability**

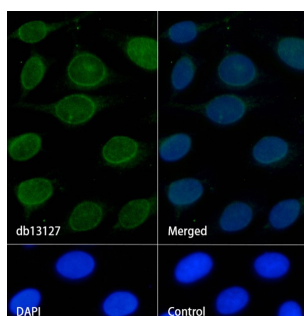
Store at -20°C. Recommended to aliquot into single-use vials. Supplied in 1X PBS (pH 7.4). BSA and Azide Free. Stable for 12 months from date of receipt.



Western blot analysis of extracts from K562, C6, 3T3, HeLa cells and Rat brain tissue using [db13127](#) at 1:1000.



Western blot analysis of extracts from HepG2, A431 cells and Rat heart, Mouse kidney tissues using [db13127](#) at 1:1000.



Immunofluorescence analysis of HeLa cells labelling Lamin B1 with [db13127](#).

The cells were fixed with cold 100% methanol (10min, 4°C) and blocked in 1% BSA/10% normal goat serum/0.3M glycine in 0.1% PBS-Tween 20 for 1h. The cells were then incubate with [db13127](#) (1:50) at room temprature for 1h, followed by a further incubation at room temperature for 45min with Goat Anti Rabbit IgG (H+L)-AF488 ([db10005](#), shown in green). Nuclear DNA was labeled in blue with DAPI.

Control: Secondary antibody only.