

Recombinant

DGRmAb®

## Phospho-GSK3 beta (Ser9) (DGR12826) Rabbit mAb (PBS Only)

db13257-PBS

Package : 100µg

**Product Name** : Phospho-GSK3 beta (Ser9) (DGR12826) Rabbit mAb (PBS Only)**Cat.No.:** db13257-PBS**Synonyms** : Serine/threonine-protein kinase GSK3B**Application** : WB, IHC-P, ICC/IF**Reactivity** : Human**Host species** : Rabbit**Background**

The protein encoded by this gene is a serine-threonine kinase belonging to the glycogen synthase kinase subfamily. It is a negative regulator of glucose homeostasis and is involved in energy metabolism, inflammation, ER-stress, mitochondrial dysfunction, and apoptotic pathways. Defects in this gene have been associated with Parkinson disease and Alzheimer disease. [provided by RefSeq, Aug 2017]

**Immunogen**

A synthetic phosphopeptide corresponding to residues surrounding Ser9 of human GSK3 beta

**Gene ID**

2932

**Swiss Prot**

P49841

**Synonyms**

Serine/threonine-protein kinase GSK3B

**Reactivity**

Human

**Application**

WB, IHC-P, ICC/IF

**Calculated MW**

47 kDa

**Observed MW**

47 kDa

**Host species**

Rabbit

**Clonality**

Monoclonal

**Clonality No.**

DGR12826

**Isotype**

IgG

**Purity**

Affinity Purification

**Conjugation**

Un-conjugated

**Concentration**

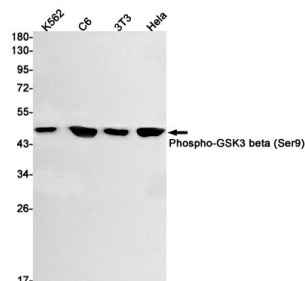
1 mg/mL

**Formulation**

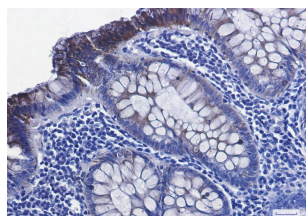
PBS Only

**Storage Stability**

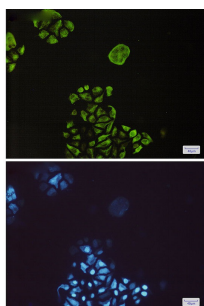
Store at -20°C. Recommended to aliquot into single-use vials. Supplied in 1X PBS (pH 7.4). BSA and Azide Free. Stable for 12 months from date of receipt.



Western blot detection of Phospho-GSK3 beta (Ser9) in K562, C6, 3T3, HeLa cell lysates using Phospho-GSK3 beta (Ser9) antibody (1:1000 diluted).



Immunohistochemical analysis of paraffin-embedded human colon cancer using [db13257](#) antibody.



Immunofluorescent analysis of HeLa cells using [db13257](#) antibody (green), and DAPI (blue).