

Recombinant

DGRmAb®

beta III Tubulin (DGR12792) Rabbit mAb (PBS Only)

db13262-PBS

Package : 100µg

Product Name : beta III Tubulin (DGR12792) Rabbit mAb (PBS Only)**Cat.No.:** db13262-PBS**Synonyms** : CDCBM; FEOM3; TUBB4; CDCBM1; CFEOM3; beta-4; CFEOM3A**Application** : WB, IHC-P, ICC/IF, FC**Reactivity** : Human,Mouse,Rat**Host species** : Rabbit**Background**

This gene encodes a class III member of the beta tubulin protein family. Beta tubulins are one of two core protein families (alpha and beta tubulins) that heterodimerize and assemble to form microtubules. This protein is primarily expressed in neurons and may be involved in neurogenesis and axon guidance and maintenance. Mutations in this gene are the cause of congenital fibrosis of the extraocular muscles type 3. Alternate splicing results in multiple transcript variants. A pseudogene of this gene is found on chromosome 6. [provided by RefSeq, Oct 2010]

Immunogen

A synthetic peptide of human beta III Tubulin

Gene ID

10381

Swiss Prot

Q13509

Synonyms

CDCBM; FEOM3; TUBB4; CDCBM1; CFEOM3; beta-4; CFEOM3A

Reactivity

Human,Mouse,Rat

Application

WB, IHC-P, ICC/IF, FC

Calculated MW

50 kDa

Observed MW

50 kDa

Host species

Rabbit

Clonality

Monoclonal

Clonality No.

DGR12792

Isotype

IgG

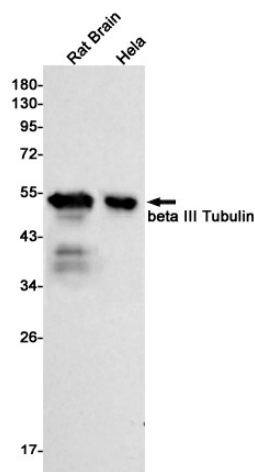
Purity

Affinity Purification

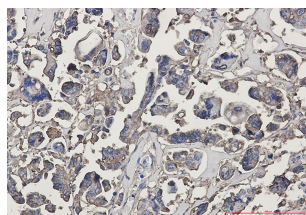
Conjugation

Un-conjugated

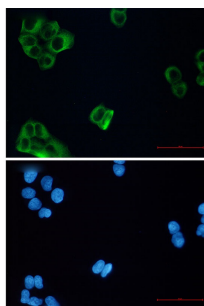
Concentration	1 mg/mL
Formulation	PBS Only
Storage Stability	Store at -20°C. Recommended to aliquot into single-use vials. Supplied in 1X PBS (pH 7.4). BSA and Azide Free. Stable for 12 months from date of receipt.



Western blot detection of beta III Tubulin in Rat Brain, HeLa cell lysates using beta III Tubulin antibody (1:1000 diluted).



Immunohistochemical analysis of paraffin-embedded human Cholangiocarcinoma using db13262 antibody.



Immunofluorescent analysis of HeLa cells using db13262 antibody (green), and DAPI (blue).