

Recombinant

DGRmAb®

Phospho-c-Met (Tyr1349) (DGR31666) Rabbit mAb (PBS Only)

db13345-PBS

Package : 10µg 100µg

Product Name : Phospho-c-Met (Tyr1349) (DGR31666) Rabbit mAb (PBS Only)**Cat.No.:** db13345-PBS**Synonyms** : HGFR; AUTS9; RCCP2; c-Met; DFNB97**Application** : WB, IHC-P, IP**Reactivity** : Human**Host species** : Rabbit**Background**

This gene encodes a member of the receptor tyrosine kinase family of proteins and the product of the proto-oncogene MET. The encoded preproprotein is proteolytically processed to generate alpha and beta subunits that are linked via disulfide bonds to form the mature receptor. Further processing of the beta subunit results in the formation of the M10 peptide, which has been shown to reduce lung fibrosis. Binding of its ligand, hepatocyte growth factor, induces dimerization and activation of the receptor, which plays a role in cellular survival, embryogenesis, and cellular migration and invasion. Mutations in this gene are associated with papillary renal cell carcinoma, hepatocellular carcinoma, and various head and neck cancers. Amplification and overexpression of this gene are also associated with multiple human cancers. [provided by RefSeq, May 2016]

Immunogen

A synthetic phosphopeptide corresponding to residues surrounding Tyr1349 of human Met

Gene ID

4233

Swiss Prot

P08581

Synonyms

HGFR; AUTS9; RCCP2; c-Met; DFNB97

Reactivity

Human

Application

WB, IHC-P, IP

Calculated MW

156 kDa

Observed MW

170140 kDa

Host species

Rabbit

Clonality

Monoclonal

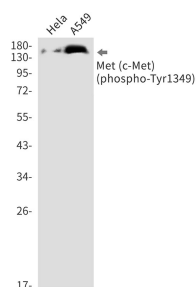
Clonality No.

DGR31666

Isotype

IgG

Purity	Affinity Purification
Conjugation	Un-conjugated
Concentration	1 mg/mL
Formulation	PBS Only
Storage Stability	Store at -20°C. Recommended to aliquot into single-use vials. Supplied in 1X PBS (pH 7.4). BSA and Azide Free. Stable for 12 months from date of receipt.



Western blot detection of Met (c-Met) (phospho-Tyr1349) in HeLa,A549 cell lysates using Met (c-Met) (phospho-Tyr1349) antibody(1:1000 diluted).