

Recombinant

DGRmAb®

PRAS40 (DGR32006) Rabbit mAb (PBS Only)

db13360-PBS

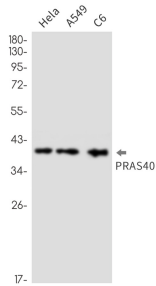
Package : 10µg 100µg

Product Name : PRAS40 (DGR32006) Rabbit mAb (PBS Only)**Cat.No.:** db13360-PBS**Synonyms** : Lobe; PRAS40**Application** : WB**Reactivity** : Human,Mouse,Rat**Host species** : Rabbit

Background	AKT1S1 is a proline-rich substrate of AKT (MIM 164730) that binds 14-3-3 protein (see YWHAH, MIM 113508) when phosphorylated (Kovacina et al., 2003 [PubMed 12524439]).[supplied by OMIM, Mar 2008]
Immunogen	A synthetic peptide of human PRAS40
Gene ID	84335
Swiss Prot	Q96B36
Synonyms	Lobe; PRAS40
Reactivity	Human,Mouse,Rat
Application	WB
Calculated MW	27 kDa
Observed MW	40 kDa
Host species	Rabbit
Clonality	Monoclonal
Clonality No.	DGR32006
Isotype	IgG
Purity	Affinity Purification
Conjugation	Un-conjugated
Concentration	1 mg/mL
Formulation	PBS Only

Storage Stability

Store at -20°C. Recommended to aliquot into single-use vials. Supplied in 1X PBS (pH 7.4). BSA and Azide Free. Stable for 12 months from date of receipt.



Western blot detection of PRAS40 in HeLa,A549,C6 cell lysates using PRAS40 antibody(1:1000 diluted).