

Recombinant

DGRmAb®

Phospho-Tau (Ser202) (DGR12876) Rabbit mAb (PBS Only)

db13380-PBS

Package : 10µg 100µg

Product Name : Phospho-Tau (Ser202) (DGR12876) Rabbit mAb (PBS Only)**Cat.No.:** db13380-PBS**Synonyms** : TAU; MSTD; PPND; DDPAC; MAPTL; MTBT1; MTBT2; FTDP-17; PPP1R103**Application** : WB**Reactivity** : Human,Mouse,Rat**Host species** : Rabbit**Background**

This gene encodes the microtubule-associated protein tau (MAPT) whose transcript undergoes complex, regulated alternative splicing, giving rise to several mRNA species. MAPT transcripts are differentially expressed in the nervous system, depending on stage of neuronal maturation and neuron type. MAPT gene mutations have been associated with several neurodegenerative disorders such as Alzheimer's disease, Pick's disease, frontotemporal dementia, cortico-basal degeneration and progressive supranuclear palsy. [provided by RefSeq, Jul 2008]

Immunogen

A synthetic phosphopeptide corresponding to residues surrounding Ser202 of human Tau

Gene ID

4137

Swiss Prot

P10636

Synonyms

TAU; MSTD; PPND; DDPAC; MAPTL; MTBT1; MTBT2; FTDP-17; PPP1R103

Reactivity

Human,Mouse,Rat

Application

WB

Calculated MW

79 kDa

Observed MW

50-80 kDa

Host species

Rabbit

Clonality

Monoclonal

Clonality No.

DGR12876

Isotype

IgG

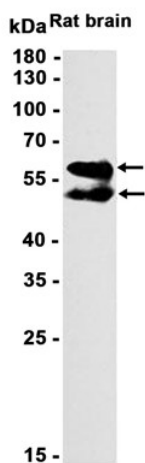
Purity

Affinity Purification

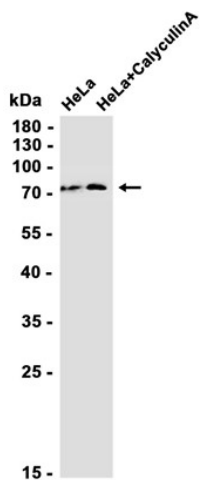
Conjugation

Un-conjugated

Concentration	1 mg/mL
Formulation	PBS Only
Storage Stability	Store at -20°C. Recommended to aliquot into single-use vials. Supplied in 1X PBS (pH 7.4). BSA and Azide Free. Stable for 12 months from date of receipt.



Western blot analysis of extracts from Rat brain tissue using [db13380](#) at 1:1000.



Western blot analysis of extracts from HeLa cells using [db13380](#) at 1:1000.