

Recombinant

DGRmAb®

Hsp27 (DGR14279) Rabbit mAb (PBS Only)

db13418-PBS

Package : 10µg 100µg

Product Name : Hsp27 (DGR14279) Rabbit mAb (PBS Only)**Cat.No.:** db13418-PBS**Synonyms** : CMT2F; HMN2B; HSP27; HSP28; Hsp25; SRP27; HS.76067; HEL-S-102**Application** : WB, IHC-P**Reactivity** : Human**Host species** : Rabbit**Background**

This gene encodes a member of the small heat shock protein (HSP20) family of proteins. In response to environmental stress, the encoded protein translocates from the cytoplasm to the nucleus and functions as a molecular chaperone that promotes the correct folding of other proteins. This protein plays an important role in the differentiation of a wide variety of cell types. Expression of this gene is correlated with poor clinical outcome in multiple human cancers, and the encoded protein may promote cancer cell proliferation and metastasis, while protecting cancer cells from apoptosis. Mutations in this gene have been identified in human patients with Charcot-Marie-Tooth disease and distal hereditary motor neuropathy. [provided by RefSeq, Aug 2017]

Immunogen

A synthetic peptide of human Hsp27

Gene ID

3315

Swiss Prot

P04792

Synonyms

CMT2F; HMN2B; HSP27; HSP28; Hsp25; SRP27; HS.76067; HEL-S-102

Reactivity

Human

Application

WB, IHC-P

Calculated MW

23 kDa

Observed MW

27 kDa

Host species

Rabbit

Clonality

Monoclonal

Clonality No.

DGR14279

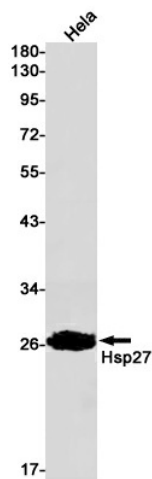
Isotype

IgG

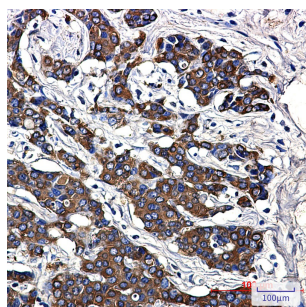
Purity

Affinity Purification

Conjugation	Un-conjugated
Concentration	1 mg/mL
Formulation	PBS Only
Storage Stability	Store at -20°C. Recommended to aliquot into single-use vials. Supplied in 1X PBS (pH 7.4). BSA and Azide Free. Stable for 12 months from date of receipt.



Western blot detection of Hsp27 in HeLa cell lysates using Hsp27 antibody(1:1000 diluted).



Immunohistochemical analysis of paraffin-embedded human breast cancer using [db13418](#) antibody.