

Recombinant

DGRmAb®

NSE (DGR11262) Rabbit mAb (PBS Only)

db13423-PBS

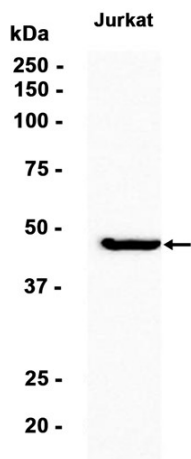
Package : 10µg 100µg

Product Name : NSE (DGR11262) Rabbit mAb (PBS Only)**Cat.No.:** db13423-PBS**Synonyms** : NSE; HEL-S-279**Application** : WB, ICC/IF, FC, IP**Reactivity** : Human,Mouse,Rat**Host species** : Rabbit

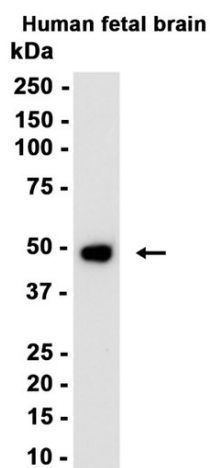
Background	This gene encodes one of the three enolase isoenzymes found in mammals. This isoenzyme, a homodimer, is found in mature neurons and cells of neuronal origin. A switch from alpha enolase to gamma enolase occurs in neural tissue during development in rats and primates. [provided by RefSeq, Jul 2008]
Immunogen	Recombinant protein of human NSE
Gene ID	2026
Swiss Prot	P09104
Synonyms	NSE; HEL-S-279
Reactivity	Human,Mouse,Rat
Application	WB, ICC/IF, FC, IP
Calculated MW	47 kDa
Observed MW	47 kDa
Host species	Rabbit
Clonality	Monoclonal
Clonality No.	DGR11262
Isotype	IgG
Purity	Affinity Purification
Conjugation	Un-conjugated
Concentration	1 mg/mL
Formulation	PBS Only

Storage Stability

Store at -20°C. Recommended to aliquot into single-use vials. Supplied in 1X PBS (pH 7.4). BSA and Azide Free. Stable for 12 months from date of receipt.



Western blot analysis of extracts from Jurkat cells using [db13423](#) at 1:3000.



Western blot analysis of extracts from Human fetal brain tissue using [db13423](#) at 1:1000.