

Recombinant

DGRmAb®

TGFBI (DGR32303) Rabbit mAb (PBS Only)

db13525-PBS

Package : 10µg 100µg

Product Name : TGFBI (DGR32303) Rabbit mAb (PBS Only)**Cat.No.:** db13525-PBS**Synonyms** : CSD; CDB1; CDG2; CSD1; CSD2; CSD3; EBMD; LCD1; BIGH3; CDGG1**Application** : WB, IHC-P, ICC/IF**Reactivity** : Human,Mouse,Rat**Host species** : Rabbit**Background**

This gene encodes an RGD-containing protein that binds to type I, II and IV collagens. The RGD motif is found in many extracellular matrix proteins modulating cell adhesion and serves as a ligand recognition sequence for several integrins. This protein plays a role in cell-collagen interactions and may be involved in endochondrial bone formation in cartilage. The protein is induced by transforming growth factor-beta and acts to inhibit cell adhesion. Mutations in this gene are associated with multiple types of corneal dystrophy. [provided by RefSeq, Jul 2008]

Immunogen

A synthetic peptide of human TGFBI

Gene ID

7045

Swiss Prot

Q15582

Synonyms

CSD; CDB1; CDG2; CSD1; CSD2; CSD3; EBMD; LCD1; BIGH3; CDGG1

Reactivity

Human,Mouse,Rat

Application

WB, IHC-P, ICC/IF

Calculated MW

54 kDa

Observed MW

70 kDa

Host species

Rabbit

Clonality

Monoclonal

Clonality No.

DGR32303

Isotype

IgG

Purity

Affinity Purification

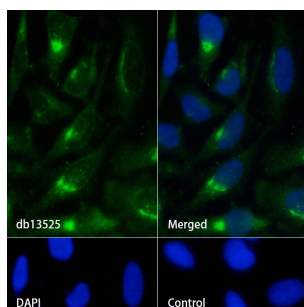
Conjugation

Un-conjugated

Concentration	1 mg/mL
Formulation	PBS Only
Storage Stability	Store at -20°C. Recommended to aliquot into single-use vials. Supplied in 1X PBS (pH 7.4). BSA and Azide Free. Stable for 12 months from date of receipt.

Human fetal kidney

Western blot analysis of extracts from Human fetal kidney tissue using [db13525](#) at 1:1000.



Immunofluorescence analysis of HeLa cells labelling TGFBI with [db13525](#).

The cells were fixed with cold 100% methanol (10min, 4°C) and blocked in 1% BSA/10% normal goat serum/0.3M glycine in 0.1% PBS-Tween 20 for 1h. The cells were then incubate with [db13525](#) (1:50) at room temprature for 1h, followed by a further incubation at room temperature for 45min with Goat Anti Rabbit IgG (H+L)-AF488 ([db10005](#), shown in green). Nuclear DNA was labeled in blue with DAPI.

Control: Secondary antibody only.