

Recombinant

DGRmAb®

Bim (DGR11947) Rabbit mAb (PBS Only)

db13581-PBS

Package : 100µg

Product Name : Bim (DGR11947) Rabbit mAb (PBS Only)**Cat.No.:** db13581-PBS**Synonyms** : BAM; BIM; BOD**Application** : WB, IHC-P, ICC/IF, FC, IP**Reactivity** : Human,Mouse,Rat**Host species** : Rabbit**Background**

The protein encoded by this gene belongs to the BCL-2 protein family. BCL-2 family members form hetero- or homodimers and act as anti- or pro-apoptotic regulators that are involved in a wide variety of cellular activities. The protein encoded by this gene contains a Bcl-2 homology domain 3 (BH3). It has been shown to interact with other members of the BCL-2 protein family and to act as an apoptotic activator. The expression of this gene can be induced by nerve growth factor (NGF), as well as by the forkhead transcription factor FKHR-L1, which suggests a role of this gene in neuronal and lymphocyte apoptosis. Transgenic studies of the mouse counterpart suggested that this gene functions as an essential initiator of apoptosis in thymocyte-negative selection. Several alternatively spliced transcript variants of this gene have been identified. [provided by RefSeq, Jun 2013]

Immunogen

A synthetic peptide of human Bim

Gene ID

10018

Swiss Prot

O43521

Synonyms

BAM; BIM; BOD

Reactivity

Human,Mouse,Rat

Application

WB, IHC-P, ICC/IF, FC, IP

Calculated MW

22 kDa

Observed MW

22 kDa

Host species

Rabbit

Clonality

Monoclonal

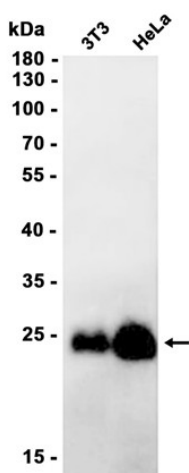
Clonality No.

DGR11947

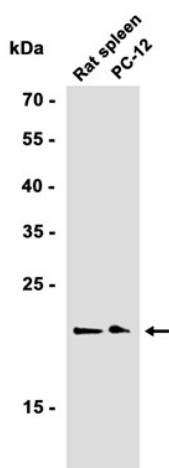
Isotype

IgG

Purity	Affinity Purification
Conjugation	Un-conjugated
Concentration	1 mg/mL
Formulation	PBS Only
Storage Stability	Store at -20°C. Recommended to aliquot into single-use vials. Supplied in 1X PBS (pH 7.4). BSA and Azide Free. Stable for 12 months from date of receipt.



Western blot analysis of extracts from 3T3, HeLa cells using [db13581](#) at 1:1000.



Western blot analysis of extracts from PC-12 cells and Rat spleen tissue using [db13581](#) at 1:1000.