

Recombinant

DGRmAb®

eIF4E (DGR16579) Rabbit mAb (PBS Only)

db13610-PBS

Package : 10µg 100µg

Product Name : eIF4E (DGR16579) Rabbit mAb (PBS Only)**Cat.No.:** db13610-PBS**Synonyms** : CBP; EIF4F; AUTS19; EIF4E1; eIF-4E; EIF4EL1**Application** : WB, IHC, ICC/IF, FC, IP**Reactivity** : Human, Mouse, Rat**Host species** : Rabbit**Background**

The protein encoded by this gene is a component of the eukaryotic translation initiation factor 4F complex, which recognizes the 7-methylguanosine cap structure at the 5' end of messenger RNAs. The encoded protein aids in translation initiation by recruiting ribosomes to the 5'-cap structure. Association of this protein with the 4F complex is the rate-limiting step in translation initiation. This gene acts as a proto-oncogene, and its expression and activation is associated with transformation and tumorigenesis. Several pseudogenes of this gene are found on other chromosomes. Alternative splicing results in multiple transcript variants. [provided by RefSeq, Sep 2015]

Immunogen

A synthetic peptide of human eIF4E

Gene ID

1977

Swiss Prot

P06730

Synonyms

CBP; EIF4F; AUTS19; EIF4E1; eIF-4E; EIF4EL1

Reactivity

Human, Mouse, Rat

Application

WB, IHC, ICC/IF, FC, IP

Calculated MW

25 kDa

Observed MW

25 kDa

Host species

Rabbit

Clonality

Monoclonal

Clonality No.

DGR16579

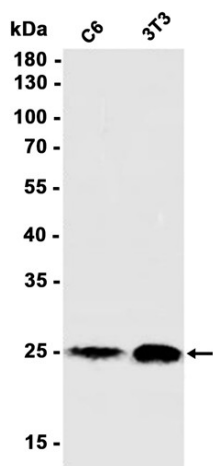
Isotype

IgG

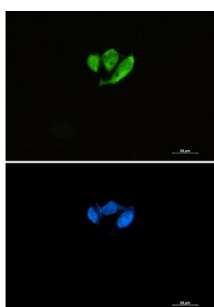
Purity

Affinity Purification

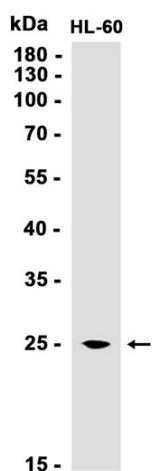
Conjugation	Un-conjugated
Concentration	1 mg/mL
Formulation	PBS Only
Storage Stability	Store at -20°C. Recommended to aliquot into single-use vials. Supplied in 1X PBS (pH 7.4). BSA and Azide Free. Stable for 12 months from date of receipt.



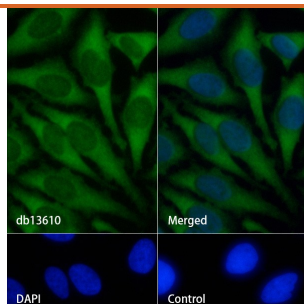
Western blot analysis of extracts from C6, 3T3 cells using [db13610](#) at 1:1000.



Immunofluorescent analysis of HCT116 cells using [db13610](#) antibody (green), and DAPI (blue).



Western blot analysis of extracts from HL-60 cells using [db13610](#) at 1:1000.



Immunofluorescence analysis of HeLa cells labelling eIF4E with **db13610**.

The cells were fixed with 4% PFA (10min, RT) followed by treatment with 0.1% Triton X-100 (10min, RT), and blocked in 1% BSA/10% normal goat serum/0.3M glycine in 0.1% PBS-Tween 20 for 1h. The cells were then incubate with **db13610** (1:200) at room temperature for 1h, followed by a further incubation at room temperature for 45min with Goat Anti Rabbit IgG (H+L)-AF488 (**db10005**, shown in green). Nuclear DNA was labeled in blue with DAPI.

Control: Secondary antibody only.