

Recombinant

DGRmAb®

**Phospho-eIF4EBP1/eIF4EBP2/eIF4EBP3 (Thr45) (DGR12685) Rabbit mAb (PBS Only)**

db13818-PBS

Package : 10µg 100µg

**Product Name** : Phospho-eIF4EBP1/eIF4EBP2/eIF4EBP3 (Thr45) (DGR12685) Rabbit mAb (PBS Only)**Cat.No.:** db13818-PBS**Synonyms** : BP-1; 4EBP1; 4E-BP1; PHAS-I**Application** : WB, IHC-P**Reactivity** : Human,Mouse**Host species** : Rabbit**Background**

This gene encodes one member of a family of translation repressor proteins. The protein directly interacts with eukaryotic translation initiation factor 4E (eIF4E), which is a limiting component of the multisubunit complex that recruits 40S ribosomal subunits to the 5' end of mRNAs. Interaction of this protein with eIF4E inhibits complex assembly and represses translation. This protein is phosphorylated in response to various signals including UV irradiation and insulin signaling, resulting in its dissociation from eIF4E and activation of mRNA translation. [provided by RefSeq, Jul 2008]

**Immunogen**

A synthetic phosphopeptide corresponding to residues surrounding Thr45 of human eIF4EBP1

**Gene ID**

1978

**Swiss Prot**

Q13541

**Synonyms**

BP-1; 4EBP1; 4E-BP1; PHAS-I

**Reactivity**

Human,Mouse

**Application**

WB, IHC-P

**Calculated MW**

13 kDa

**Observed MW**

15-20 kDa

**Host species**

Rabbit

**Clonality**

Monoclonal

**Clonality No.**

DGR12685

**Isotype**

IgG

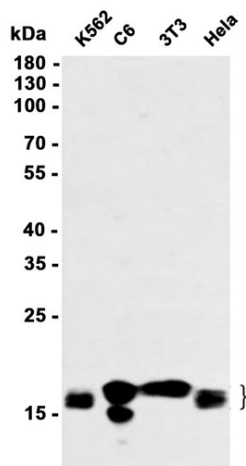
**Purity**

Affinity Purification

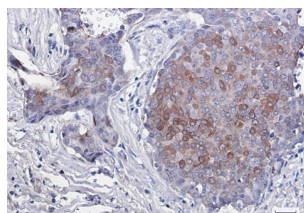
**Conjugation**

Un-conjugated

<b>Concentration</b>	1 mg/mL
<b>Formulation</b>	PBS Only
<b>Storage Stability</b>	Store at -20°C. Recommended to aliquot into single-use vials. Supplied in 1X PBS (pH 7.4). BSA and Azide Free. Stable for 12 months from date of receipt.



Western blot analysis of extracts from K562, C6, 3T3, HeLa cells using [db13818](#) at 1:1000.



Immunohistochemical analysis of paraffin-embedded human breast cancer using [db13818](#) antibody.