

Recombinant

DGRmAb®

Integrin beta 3 (DGR31115) Rabbit mAb (PBS Only)

db13857-PBS

Package : 10µg 100µg

Product Name : Integrin beta 3 (DGR31115) Rabbit mAb (PBS Only)**Cat.No.:** db13857-PBS**Synonyms** : GT; CD61; GP3A; BDPLT2; GPIIIa; BDPLT16**Application** : WB, FC, IP**Reactivity** : Human,Mouse,Rat**Host species** : Rabbit**Background**

The ITGB3 protein product is the integrin beta chain beta 3. Integrins are integral cell-surface proteins composed of an alpha chain and a beta chain. A given chain may combine with multiple partners resulting in different integrins. Integrin beta 3 is found along with the alpha IIb chain in platelets. Integrins are known to participate in cell adhesion as well as cell-surface mediated signalling. [provided by RefSeq, Jul 2008]

Immunogen

A synthetic peptide of human Integrin beta 3

Gene ID

3690

Swiss Prot

P05106

Synonyms

GT; CD61; GP3A; BDPLT2; GPIIIa; BDPLT16

Reactivity

Human,Mouse,Rat

Application

WB, FC, IP

Calculated MW

87 kDa

Observed MW

100 kDa

Host species

Rabbit

Clonality

Monoclonal

Clonality No.

DGR31115

Isotype

IgG

Purity

Affinity Purification

Conjugation

Un-conjugated

Concentration

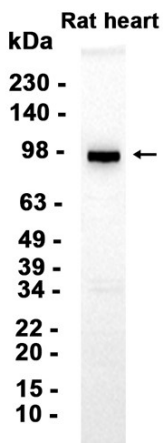
1 mg/mL

Formulation

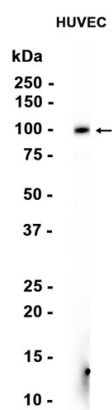
PBS Only

Storage Stability

Store at -20°C. Recommended to aliquot into single-use vials. Supplied in 1X PBS (pH 7.4). BSA and Azide Free. Stable for 12 months from date of receipt.



Western blot analysis of extracts from Rat heart tissue using [db13857](#) at 1:1000.



Western blot analysis of extracts from HUVEC cells using [db13857](#) at 1:1000.