

Recombinant

DGRmAb®

CYP1B1 (DGR14349) Rabbit mAb (PBS Only)

db14044-PBS

Package : 10µg 100µg

Product Name : CYP1B1 (DGR14349) Rabbit mAb (PBS Only)**Cat.No.:** db14044-PBS**Synonyms** : CP1B; ASGD6; GLC3A; CYP1B1; P4501B1**Application** : WB, IHC-P**Reactivity** : Human,Mouse,Rat**Host species** : Rabbit**Background**

This gene encodes a member of the cytochrome P450 superfamily of enzymes. The cytochrome P450 proteins are monooxygenases which catalyze many reactions involved in drug metabolism and synthesis of cholesterol, steroids and other lipids. The enzyme encoded by this gene localizes to the endoplasmic reticulum and metabolizes procarcinogens such as polycyclic aromatic hydrocarbons and 17beta-estradiol. Mutations in this gene have been associated with primary congenital glaucoma; therefore it is thought that the enzyme also metabolizes a signaling molecule involved in eye development, possibly a steroid. [provided by RefSeq, Jul 2008]

Immunogen

Recombinant protein of human CYP1B1

Gene ID

1545

Swiss Prot

Q16678

Synonyms

CP1B; ASGD6; GLC3A; CYP1B1; P4501B1

Reactivity

Human,Mouse,Rat

Application

WB, IHC-P

Calculated MW

61 kDa

Observed MW

61 kDa

Host species

Rabbit

Clonality

Monoclonal

Clonality No.

DGR14349

Isotype

IgG

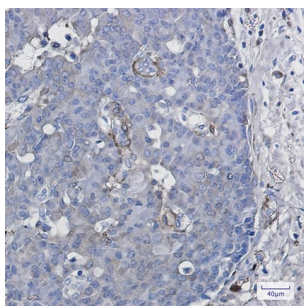
Purity

Affinity Purification

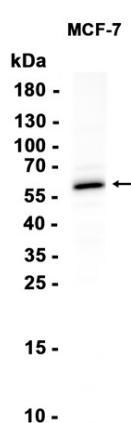
Conjugation

Un-conjugated

Concentration	1 mg/mL
Formulation	PBS Only
Storage Stability	Store at -20°C. Recommended to aliquot into single-use vials. Supplied in 1X PBS (pH 7.4). BSA and Azide Free. Stable for 12 months from date of receipt.



Immunohistochemical analysis of paraffin-embedded human breast cancer using [db14044](#) antibody.



Western blot analysis of extracts from MCF-7 cells using [db14044](#) at 1:1000.