

Recombinant

DGRmAb®

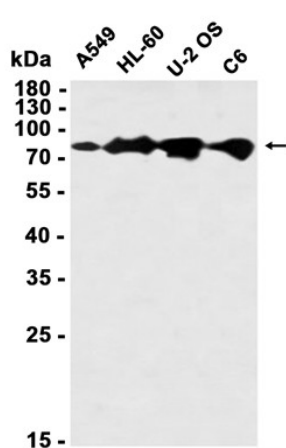
**Phospho-eIF4B (Ser406) (DGR32627) Rabbit mAb (PBS Only)**

db14066-PBS

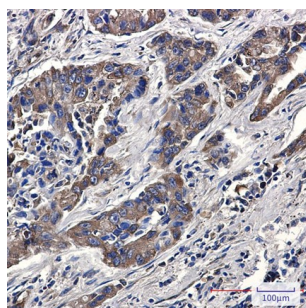
Package : 10µg 100µg

**Product Name** : Phospho-eIF4B (Ser406) (DGR32627) Rabbit mAb (PBS Only)**Cat.No.:** db14066-PBS**Synonyms** : EIF-4B; PRO1843**Application** : WB, IHC-P**Reactivity** : Human,Mouse,Rat**Host species** : Rabbit

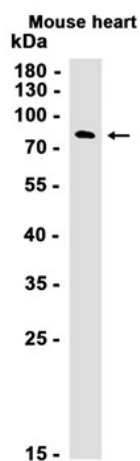
<b>Background</b>	Required for the binding of mRNA to ribosomes
<b>Immunogen</b>	A synthetic phosphopeptide corresponding to residues surrounding Ser406 of human eIF4B
<b>Gene ID</b>	1975
<b>Swiss Prot</b>	P23588
<b>Synonyms</b>	EIF-4B; PRO1843
<b>Reactivity</b>	Human,Mouse,Rat
<b>Application</b>	WB, IHC-P
<b>Calculated MW</b>	69 kDa
<b>Observed MW</b>	80 kDa
<b>Host species</b>	Rabbit
<b>Clonality</b>	Monoclonal
<b>Clonality No.</b>	DGR32627
<b>Isotype</b>	IgG
<b>Purity</b>	Affinity Purification
<b>Conjugation</b>	Un-conjugated
<b>Concentration</b>	1 mg/mL
<b>Formulation</b>	PBS Only
<b>Storage Stability</b>	Store at -20°C. Recommended to aliquot into single-use vials. Supplied in 1X PBS (pH 7.4). BSA and Azide Free. Stable for 12 months from date of receipt.



Western blot analysis of extracts from A549, HL-60, U-2 OS, C6 cells using [db14066](#) at 1:1000.



Immunohistochemical analysis of paraffin-embedded human lung cancer using [db14066](#) antibody.



Western blot analysis of extracts from Mouse heart tissue using [db14066](#) at 1:1000.