

Recombinant

DGRmAb®

Phospho-AMPK alpha 1 (Ser496) (DGR31610) Rabbit mAb (PBS Only)

db14230-PBS

Package : 10µg 100µg

Product Name : Phospho-AMPK alpha 1 (Ser496) (DGR31610) Rabbit mAb (PBS Only)**Cat.No.:** db14230-PBS**Synonyms** : AMPK; AMPKa1**Application** : WB, ICC/IF**Reactivity** : Human**Host species** : Rabbit**Background**

The protein encoded by this gene belongs to the ser/thr protein kinase family. It is the catalytic subunit of the 5'-prime-AMP-activated protein kinase (AMPK). AMPK is a cellular energy sensor conserved in all eukaryotic cells. The kinase activity of AMPK is activated by the stimuli that increase the cellular AMP/ATP ratio. AMPK regulates the activities of a number of key metabolic enzymes through phosphorylation. It protects cells from stresses that cause ATP depletion by switching off ATP-consuming biosynthetic pathways. Alternatively spliced transcript variants encoding distinct isoforms have been observed. [provided by RefSeq, Jul 2008]

Immunogen

A synthetic phosphopeptide corresponding to residues surrounding Ser496 of human AMPK alpha 1

Gene ID

5562

Swiss Prot

Q13131

Synonyms

AMPK; AMPKa1

Reactivity

Human

Application

WB, ICC/IF

Calculated MW

64 kDa

Observed MW

64 kDa

Host species

Rabbit

Clonality

Monoclonal

Clonality No.

DGR31610

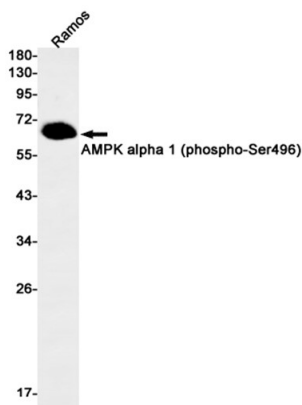
Isotype

IgG

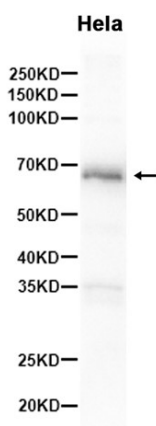
Purity

Affinity Purification

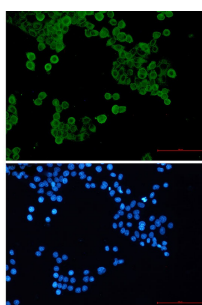
Conjugation	Un-conjugated
Concentration	1 mg/mL
Formulation	PBS Only
Storage Stability	Store at -20°C. Recommended to aliquot into single-use vials. Supplied in 1X PBS (pH 7.4). BSA and Azide Free. Stable for 12 months from date of receipt.



Western blot detection of AMPK alpha 1 (phospho-Ser496) in Ramos cell lysates using AMPK alpha 1 (phospho-Ser496) antibody(1:1000 diluted).



Western blot analysis of extracts from HeLa cells using [db14230](#) at 1:1000.



Immunofluorescent analysis of HeLa cells using [db14230](#) antibody (green), and DAPI (blue).