

Recombinant

DGRmAb®

Activin Receptor Type IA (DGR15002) Rabbit mAb (PBS Only)

db14310-PBS

Package : 10µg 100µg

Product Name : Activin Receptor Type IA (DGR15002) Rabbit mAb (PBS Only)**Cat.No.:** db14310-PBS**Synonyms** : FOP; ALK2; SKR1; TSRI; ACTRI; ACVR1A; ACVRLK2**Application** : WB, IP**Reactivity** : Human,Mouse,Rat**Host species** : Rabbit**Background**

Activins are dimeric growth and differentiation factors which belong to the transforming growth factor-beta (TGF-beta) superfamily of structurally related signaling proteins. Activins signal through a heteromeric complex of receptor serine kinases which include at least two type I (I and IB) and two type II (II and IIB) receptors. These receptors are all transmembrane proteins, composed of a ligand-binding extracellular domain with cysteine-rich region, a transmembrane domain, and a cytoplasmic domain with predicted serine/threonine specificity. Type I receptors are essential for signaling; and type II receptors are required for binding ligands and for expression of type I receptors. Type I and II receptors form a stable complex after ligand binding, resulting in phosphorylation of type I receptors by type II receptors. This gene encodes activin A type I receptor which signals a particular transcriptional response in concert with activin type II receptors. Mutations in this gene are associated with fibrodysplasia ossificans progressive. [provided by RefSeq, Jul 2008]

Immunogen

A synthetic peptide of human Activin Receptor Type IA

Gene ID

90

Swiss Prot

Q04771

Synonyms

FOP; ALK2; SKR1; TSRI; ACTRI; ACVR1A; ACVRLK2

Reactivity

Human,Mouse,Rat

Application

WB, IP

Calculated MW

57 kDa

Observed MW

57 kDa

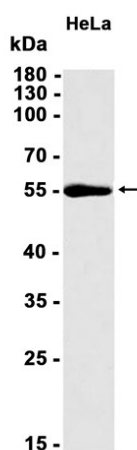
Host species

Rabbit

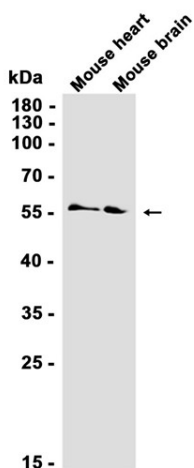
Clonality

Monoclonal

Clonality No.	DGR15002
Isotype	IgG
Purity	Affinity Purification
Conjugation	Un-conjugated
Concentration	1 mg/mL
Formulation	PBS Only
Storage Stability	Store at -20°C. Recommended to aliquot into single-use vials. Supplied in 1X PBS (pH 7.4). BSA and Azide Free. Stable for 12 months from date of receipt.



Western blot analysis of extracts from HeLa cells using db14310 at 1:1000.



Western blot analysis of extracts from Mouse heart, Mouse brain tissues using db14310 at 1:1000.