

Recombinant

DGRmAb®

IKK alpha/beta (DGR20221) Rabbit mAb (PBS Only)

db14327-PBS

Package : 10µg 100µg

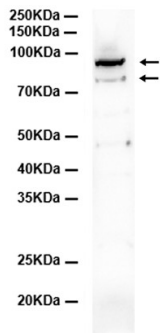
Product Name : IKK alpha/beta (DGR20221) Rabbit mAb (PBS Only)**Cat.No.:** db14327-PBS**Synonyms** : IKK1; IKKA; IKBKA; TCF16; NFKB1KA; IKK-alpha**Application** : WB, IP**Reactivity** : Human,Mouse,Rat**Host species** : Rabbit

Background	This gene encodes a member of the serine/threonine protein kinase family. The encoded protein, a component of a cytokine-activated protein complex that is an inhibitor of the essential transcription factor NF-kappa-B complex, phosphorylates sites that trigger the degradation of the inhibitor via the ubiquitination pathway, thereby activating the transcription factor. [provided by RefSeq, Jul 2008]
Immunogen	Recombinant protein of human IKK alpha/beta
Gene ID	1147
Swiss Prot	O14920
Synonyms	IKK1; IKKA; IKBKA; TCF16; NFKB1KA; IKK-alpha
Reactivity	Human,Mouse,Rat
Application	WB, IP
Calculated MW	85,87 kDa
Observed MW	85,87 kDa
Host species	Rabbit
Clonality	Monoclonal
Clonality No.	DGR20221
Isotype	IgG
Purity	Affinity Purification
Conjugation	Un-conjugated
Concentration	1 mg/mL
Formulation	PBS Only

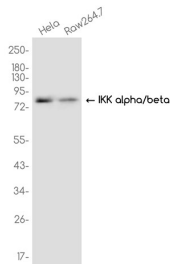
Storage Stability

Store at -20°C. Recommended to aliquot into single-use vials. Supplied in 1X PBS (pH 7.4). BSA and Azide Free. Stable for 12 months from date of receipt.

Mouse kidney



Western blot analysis of extracts from Mouse kidney tissue using [db14327](#) at 1:1000.



Western blot analysis of extracts from HeLa, RAW264.7 cells using [db14327](#) at 1:1000.