

Recombinant

DGRmAb®

EpCAM (DGR14159) Rabbit mAb (PBS Only)

db14338-PBS

Package : 10µg 100µg

Product Name : EpCAM (DGR14159) Rabbit mAb (PBS Only)**Cat.No.:** db14338-PBS**Synonyms** : ESA; KSA; M4S1; MK-1; DIAR5; EGP-2; EGP40; KS1/4; MIC18; TROP1; EGP314; HNPCC8;
TACSTD1**Application** : WB, IHC-P, ICC/IF, IP**Reactivity** : Human,Mouse,Rat**Host species** : Rabbit**Background**

This gene encodes a carcinoma-associated antigen and is a member of a family that includes at least two type I membrane proteins. This antigen is expressed on most normal epithelial cells and gastrointestinal carcinomas and functions as a homotypic calcium-independent cell adhesion molecule. The antigen is being used as a target for immunotherapy treatment of human carcinomas. Mutations in this gene result in congenital tufting enteropathy. [provided by RefSeq, Dec 2008]

Immunogen

Recombinant protein of human EpCAM

Gene ID

4072

Swiss Prot

P16422

SynonymsESA; KSA; M4S1; MK-1; DIAR5; EGP-2; EGP40; KS1/4; MIC18; TROP1; EGP314; HNPCC8;
TACSTD1**Reactivity**

Human,Mouse,Rat

Application

WB, IHC-P, ICC/IF, IP

Calculated MW

35 kDa

Observed MW

40 kDa

Host species

Rabbit

Clonality

Monoclonal

Clonality No.

DGR14159

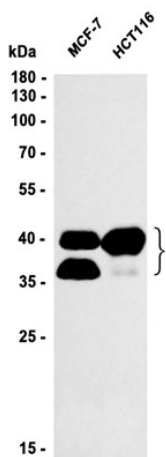
Isotype

IgG

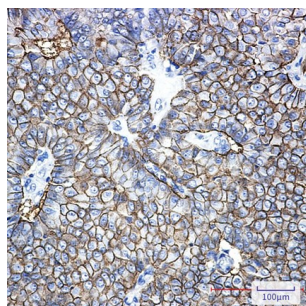
Purity

Affinity Purification

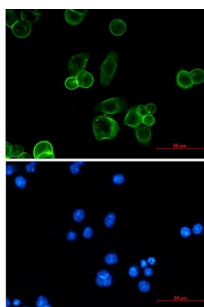
Conjugation	Un-conjugated
Concentration	1 mg/mL
Formulation	PBS Only
Storage Stability	Store at -20°C. Recommended to aliquot into single-use vials. Supplied in 1X PBS (pH 7.4). BSA and Azide Free. Stable for 12 months from date of receipt.



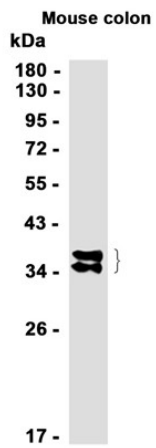
Western blot analysis of extracts from MCF-7, HCT116 cells using [db14338](#) at 1:1000.



Immunohistochemical analysis of paraffin-embedded human breast cancer using [db14338](#) antibody.



Immunofluorescent analysis of MCF-7 cells using [db14338](#) antibody (green), and DAPI (blue).



Western blot analysis of extracts from Mouse colon tissue using db14338 at 1:1000.